

NOTES:

ELECTRICAL:

1. Contact Resistance : 20MΩ MAX
2. Insulation Resistance : 500MΩ MIN @ 500V DC
3. Withstand Voltage : DC 1000V AC 700V RMS 60Hz, 1MIN
4. Component testing for Cat.6A to ISO/IEC 11801 Ed.2.2:2011-06
 DIN EN 50173-1:2011-09
 TIA/EIA-568-C.2 (2009-08)
 IEC 60603-7-5
5. Compliance with Class EA up to 500 MHz to ISO/IEC 11801 Ed.2.2:2011-06
 DIN EN 50173-1:2011-09

ENVIRONMENTAL:

1. Storage : -40° TO+70°
2. Operation : -10° to+60°

MECHANICAL

1. SHIELD MATERIAL: ZINC ALLOY
2. IDC MATERIAL: PC TERMINAL:PHOSPHOR BRONZE, TIN PLATING
3. RJ45 Contact Life: 750 Times Min
4. Plug inforce:<30N
5. Solid cable:1/22AWG(0.65MM)-1/24AWG(0.45MM) ID:0.8MM-1.6MM
6. Cable OD: 5.0mm-8.5mm
7. PoE per IEEE 802.3af, PoE+ per IEEE 802.3at

Fluke Test:Permanent Link ISO 11801 (PL2)Class Ea 1000MHZ
 AWG23/1 CAT.7 Shielded 15M
 RoHS(EU2015/863) and REACH Compliant
 PACKING:1PCS/PE BAG

MATERIAL LIST:

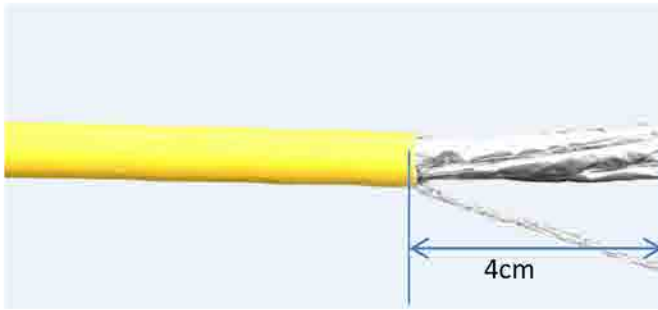
| | | | | |
|---|-------------------|--------------------------------------|---|--|
| ⑦ | MODULAR COVER | White/PC with T568A/B label | 1 | |
| ⑥ | RJ 45 JACK INSERT | PHOSPHOR BRONZE 8P8C 6U" GOLD PLATED | 8 | |
| ⑤ | PCB | 1.6mm UL 94V0 | 1 | |
| ④ | IDC BODY | White/PC | 1 | |
| ③ | IDC PIN | PHOSPHOR BRONZE & TINNED | 8 | |
| ② | LABEL COLOR CODE | T568A/B | 2 | |
| ① | IDC TERMINAL | FOR 22-24AWG(0.45mm-0.65mm) CABLE | 1 | |

| NO | PARTS NAME | SPECIFICATION STANDARD | QT' Y | REMARK |
|----|------------|-------------------------------|------------|--------|
| | | | | |
| | | NEW | 2019-05-09 | A |
| BY | CHK | REVISION RECORD MODIFICATIONS | DATE | REV. |

| SYNERGY 21 | | | | | |
|--------------|--------------------------|----------------------|------------|---------|----|
| CUSTOMER | | | ITEM NO. | S216349 | |
| PRODUCT NAME | CAT.6A STP KEYSTONE JACK | manufacture country: | china | UNIT | MM |
| DRAWNBY | CHECKBY | APPOBY | DATE | | |
| SYNERGY 21 | SYNERGY 21 | SYNERGY 21 | 2019-05-09 | | |

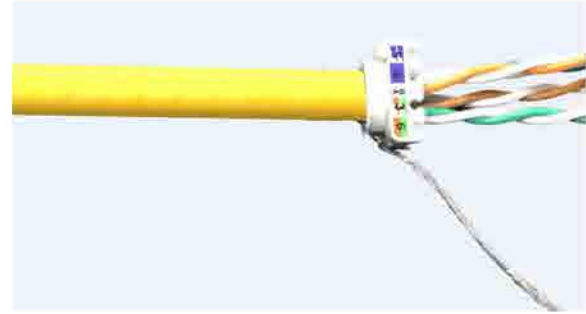
Montageanleitung/Installation Instruction

Super short body Cat.6A Keystone Jack



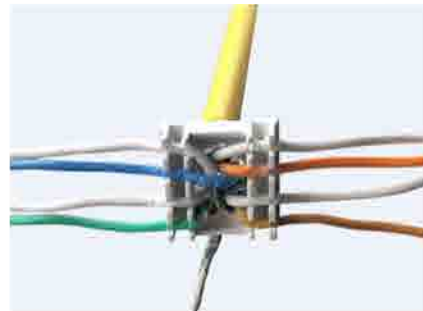
- ①. Stripping off approx. 4cm, twist the braiding into a strand. Remove the pair shielding.

- ①. Ca. 4 cm abziehen und das Geflecht zu einer Litze verweben. Entfernen Sie die Paarabschirmung.



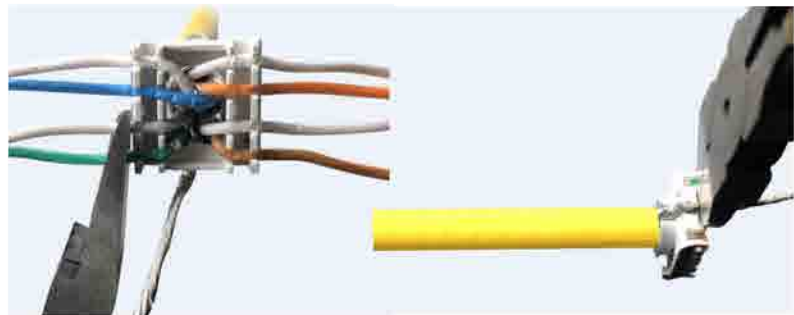
- ②. Pass the cable wires into grommet without the strand as shown in the photo.

- ②. Führen Sie die Kabeldrähte ohne die Litze in die Durchführung ein (siehe Foto).



- ③. Insert each wire in its location according to the color code.

- ③. Legen Sie jeden Draht gemäß dem Farbcode an seiner Stelle ein



- ④. Cut the wires and the strand.

- ④. Schneiden Sie die Drähte und die Litze ab.



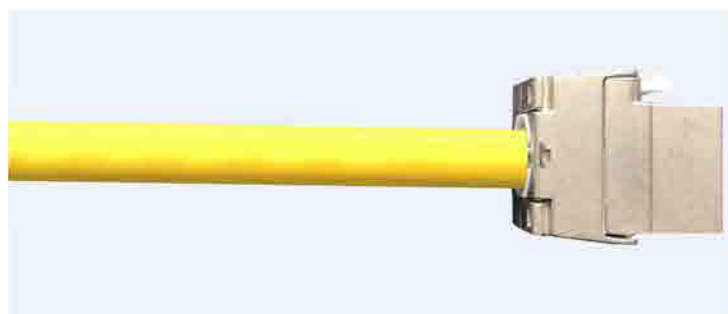
- ⑤. Make sure that the arrows of the jack are oriented in the same direction as those of the grommet.

- ⑤. Stellen Sie sicher, dass die Pfeile des Wagenhebers in die gleiche Richtung wie die der Tülle zeigen.



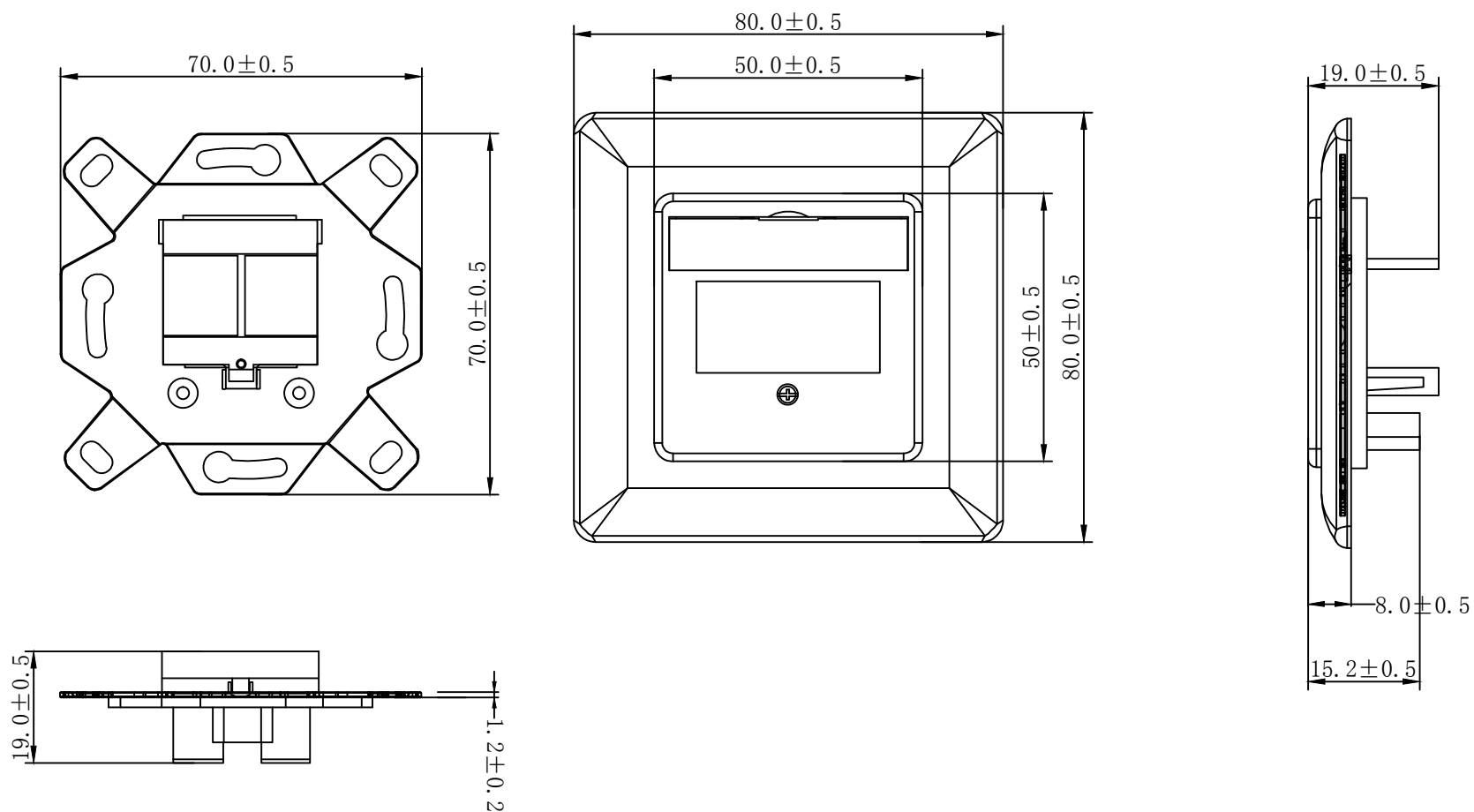
- ⑥. Connect the grommet to the connector.

- ⑥. Verbinden Sie die Tülle mit dem Anschluss.



- ⑦. Fold the cheeks of the RJ45 jack until completely closed.

- ⑦. Falten Sie die Wangen der RJ45-Buchse, bis sie vollständig geschlossen sind.



Chart

| ITEM NO. | COLOUR |
|----------|---------|
| S216355 | RAL9010 |
| | RAL1013 |
| | RAL9003 |

2 Port 90° keystone jack
 Zinc Alloy Housing
 Outlet Housing: ABS /UL94V2
 Outlet Base: ABS /UL94V2
 RoHS 2.0 and Reach Compliant
 PACKING: 1PCS/ PE BAG

| SYNERGY 21 | | | | | | | | | | |
|--------------|--|-------------------------------|---------|---------------------|------------|------------|------------|------------|--|--|
| CUSTOMER | | ITEM NO. | | See The Chart | | | | | | |
| PRODUCT NAME | 90 degree Face plate for 2 port keystone jack with zinc alloy Germany and Switzerland Type | | | manufacture country | China | UNIT | MM | | | |
| NEW | 2020-02-18 | A | DRAWNBY | CHECKBY | APPOBY | DATE | | | | |
| BY | CHK | REVISION RECORD MODIFICATIONS | DATE | REV. | SYNERGY 21 | SYNERGY 21 | SYNERGY 21 | 2020-02-18 | | |