

# DATENBLATT

## DVI 24+1 Dual Link Anschlusskabel



### Beschreibung

Dreifach Schirmung: Folie + Geflecht+ PIMF

Leitermaterial: reines Kupfer, Mantel: PVC

Vergoldete Stecker und Kontakte, Steckergehäuse umspritzt

**Beidseitig mit Ferritkern bestückt zur besseren Entstörung von Signalen im Kabel (bessere EMV Eigenschaften)**

**Kabellänge bis zu 20m!**

Dual Link Kabel

Unterstützt Auflösungen bis zu 2560 x 1600

### Allgemeine Daten

Steckverbindertyp Anschluss 1	DVI-D 24+1
Anzahl der Pole Anschluss 1	25
Ausführung Anschluss 1	Stecker
Steckverbindertyp Anschluss 2	DVI-D 24+1
Anzahl der Pole Anschluss 2	25
Ausführung Anschluss 2	Stecker

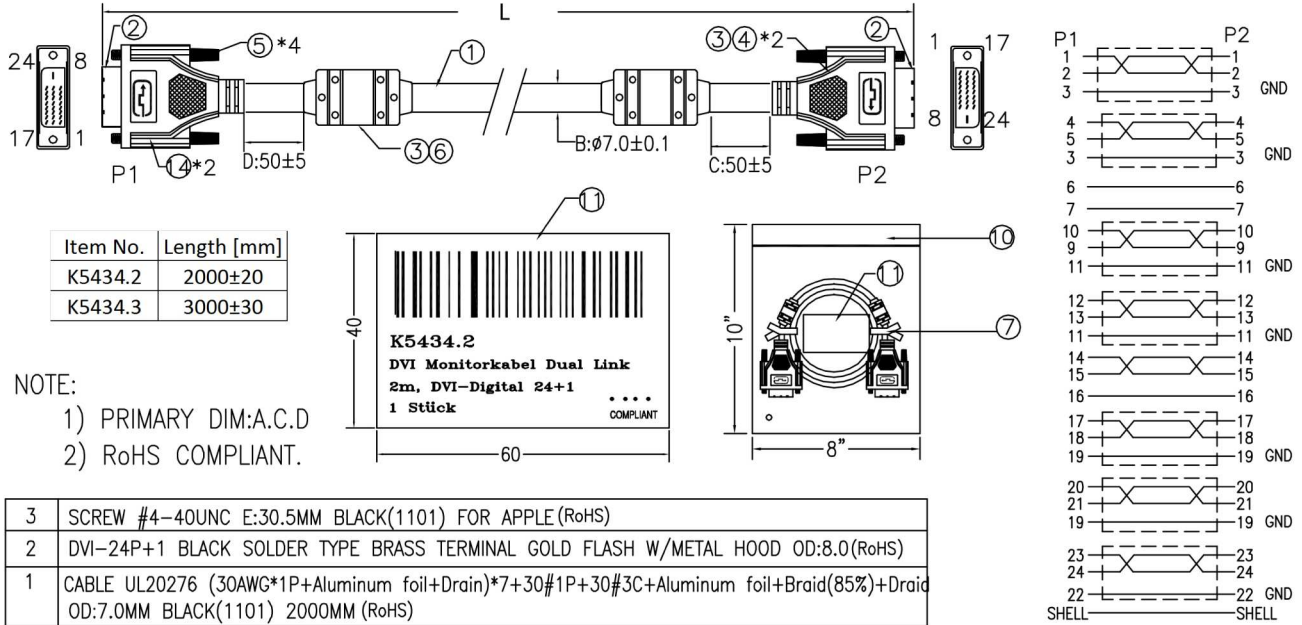
### Verfügbare Varianten

Art.Nr.	Bezeichnung	Farbe	Länge	AWG
K5434.2	DVI-D Dual Link Kabel, 2x DVI-D 24+1, St.-St., AWG 30, 2,0m, schwarz	schwarz	2,0 m	30
K5434.3	DVI-D Dual Link Kabel, 2x DVI-D 24+1, St.-St., AWG 30, 3,0m, schwarz	schwarz	3,0 m	30
K5434.5V2	DVI-D Dual Link Kabel, 2x DVI-D 24+1, St.-St., AWG 28, 5,0m, schwarz	schwarz	5,0 m	28
K5434.10V2	DVI-D Dual Link Kabel, 2x DVI-D 24+1, St.-St., AWG 24, 10,0m, schwarz	schwarz	10,0 m	24
K5434.15V2	DVI-D Dual Link Kabel, 2x DVI-D 24+1, St.-St., AWG 24, 15,0m, schwarz	schwarz	15,0 m	24
K5434.20V2	DVI-D Dual Link Kabel, 2x DVI-D 24+1, St.-St., AWG 24, 20,0m, schwarz	schwarz	20,0 m	24

# DATENBLATT

## DVI 24+1 Dual Link Anschlusskabel

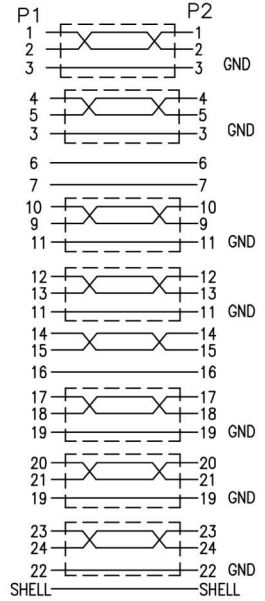
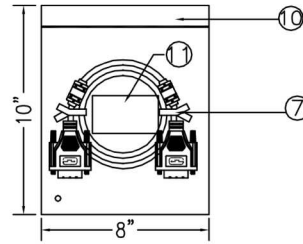
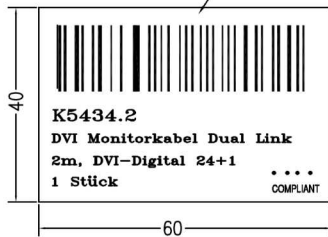
### Abbildungen



Item No.	Length [mm]
K5434.2	2000±20
K5434.3	3000±30

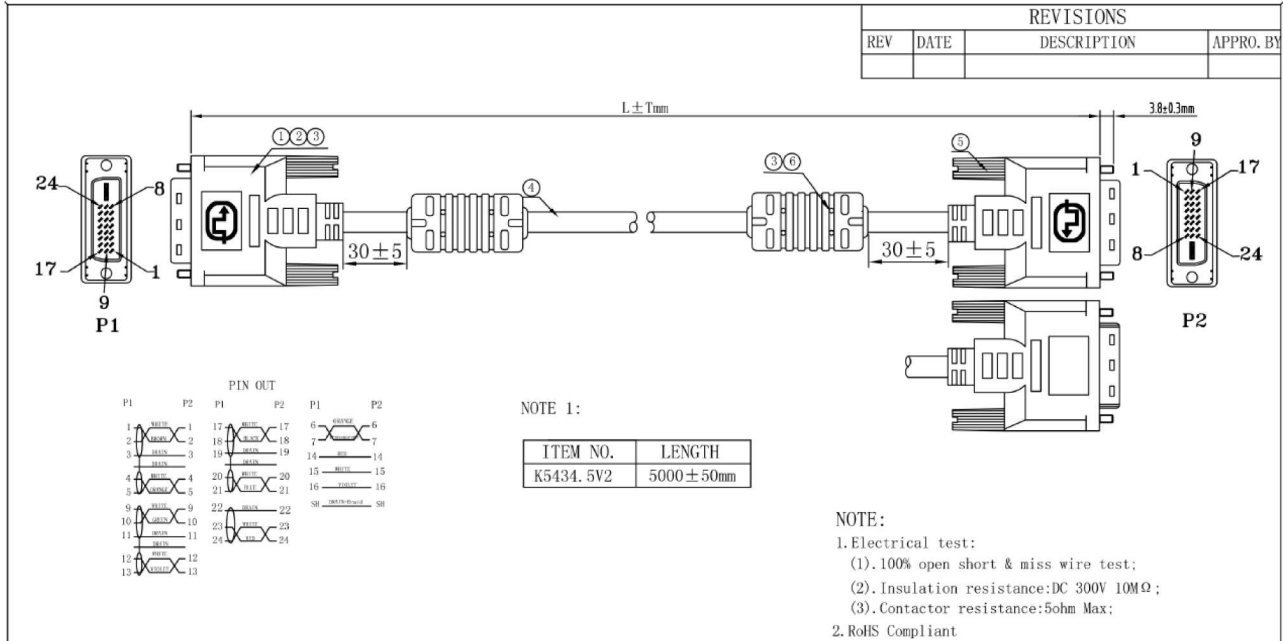
NOTE:

- 1) PRIMARY DIM:A.C.D
- 2) RoHS COMPLIANT.



3	SCREW #4-40UNC E:30.5MM BLACK(1101) FOR APPLE(RoHS)
2	DVI-24P+1 BLACK SOLDER TYPE BRASS TERMINAL GOLD FLASH W/METAL HOOD OD:8.0(RoHS)
1	CABLE UL20276 (30AWG*1P+Aluminum foil+Drain)*7+30#1P+30#3C+Aluminum foil+Braid(85%)+Drain OD:7.0MM BLACK(1101) 2000MM (RoHS)

REVISIONS			
REV	DATE	DESCRIPTION	APPRO. BY



NOTE 1:

ITEM NO.	LENGTH
K5434.5V2	5000±50mm

NOTE:

1. Electrical test:
  - (1). 100% open short & miss wire test;
  - (2). Insulation resistance: DC 300V 10MΩ;
  - (3). Contactor resistance: 5ohm Max;
2. RoHS Compliant
3. PRINT WORD: DVI Cable AWM STYLE 20276 80°C 30V VW-1

### MATERIAL LIST:

NO.	MAT. NAME	DESCRIPTION	Q' TY
6	FERRITE CORE	14. 2*8. 0*28. 5MM	2
5	SCREW	SCREW SPO: #4-40 Gold PLATED MATERIAL SCREW, C-4, 0mm*1: 47mm, MOLDING BLACK;	4
4	CABLE	DVI 28AWG(7/0. 127BC*1P-E-WAM)*7+7/0. 127BC*1P-7/0. 127BC*3C-AEB, B-Al-WG, E-7/0. 1270BC, JACKET: PVC/BLACK OD: 8.5±0. 2mm	1
3	MOLD HOOD	88A PVC COLOR: BLACK	4
2	INNER MOLD	LD-PE	2
1	DVI CONNECTOR	DVI (24+1)/M Solder Type, The Pin Gold Plating, the shell for Gold Plating	2

CUSTOMER'S ITEM		CUSTOMER		EFB	
DRAWING		TITLE			
UNIT	mm	SCALE	1:1	REV	
DRAWN BY	CHECK BY	APPRO BY	DATE		
LIUJINGJING			2011. 01. 21		