

AUTOMATIC TRANSFER SWITCH WITH BUILT-IN ETHERNET MODULE AND INDIVIDUAL OUTLET CONTROL

Dual power inputs to ensure continuous power for connected equipment, with individual outlet controlling

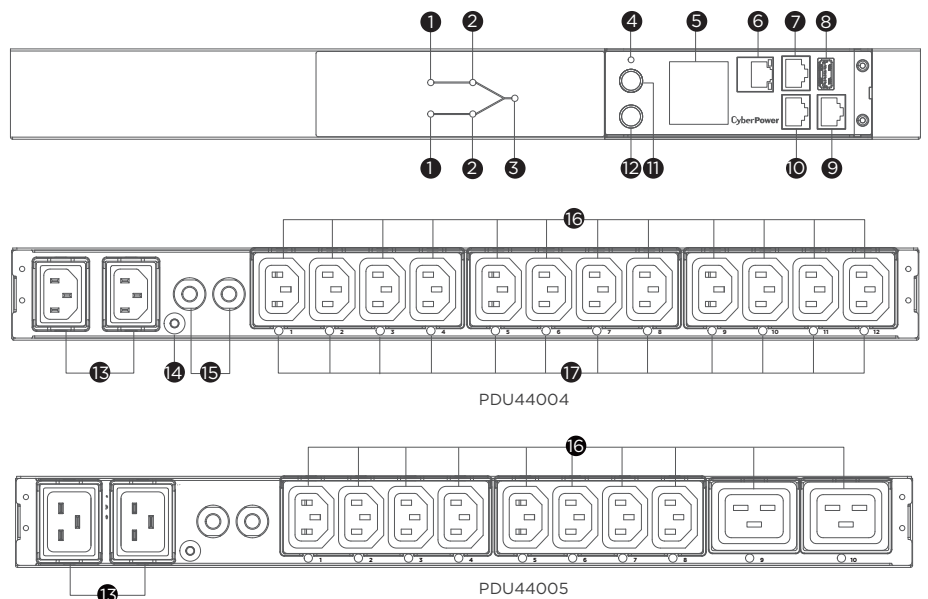
Ideal for server room and IT applications, the Switched ATS Series is a power distribution device that delivers electricity from a single source to multiple devices. The dual-input design provides power redundancy, and users can select their preferred input power source. The ATSs feature individual outlet control, which allows for immediate on/off, remote reboots, scheduled on/off, and more. The products allow real-time monitoring and remote management via the built-in Ethernet module by using the PowerPanel® Power Management Software or power management web interface, as well as supporting configurable color LCD and firmware upgrade via USB.

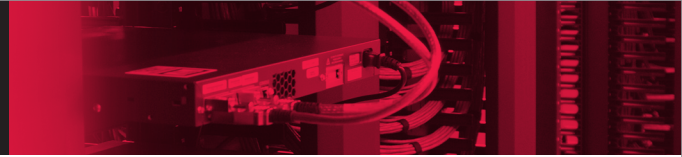
SERIES FEATURES

- Real-time Local/Remote Monitoring and Switching
- Controllable Receptacles with Power Sequencing
- Dual Inputs
- Industrial-grade Metal Housing
- Digital Real-time Load Display
- User Configurable Color LCD
- Hot-swappable LCD Design
- LED Status Indicator
- Firmware Upgrade via USB
- Support ENVIROSENSOR
- User-upgradeable Firmware
- PowerPanel® Management Software
- Adjustable Mounting Brackets
- Cord Retention Tray
- IEC Receptacle Locking

PRODUCT CALLOUTS

1. Source Indicator
2. Source Selected Indicator
3. Output Indicator
4. Status Indicator
5. LCD Display Panel
6. Ethernet Port
7. ENVIROSENSOR/Daisy Chain (In) Port
8. USB Port
9. Serial Port
10. Daisy Chain (Out) Port
11. Select Button
12. Enter Button
13. AC Inlet
14. Ground Stud
15. Circuit Breaker
16. AC Outlets
17. Outlet Indicator





TECHNICAL SPECIFICATIONS

Model Name	PDU44004	PDU44005
Input		
Nominal Input Voltage (Vac)	200 - 240	
Input Frequency (Hz)	50 / 60	
Maximum Input Current (A)	12(UL), 10(CE)	16
Input Connector Type	IEC C14 x 2	IEC C20 x 2
Power Cord Length (m.)	3.05	
Output		
Outlets - # of Bank(s) (Bank)	1	
Outlet(s) - Total	12	10
Outlet(s) - Rear	12	10
Outlet Type	IEC C13 x 12	IEC C19 x 2, IEC C13 x 8
Management & Communications		
LCD Information Display	Input Voltage (Volts), Input Frequency (Hz), Current Level (Amps), Power Consumption (Kilowatts), Network Information, Serial Number, Environment Status, Hardware Version, Firmware Version	
LED Indicators	PDU Status, Source Status, Load, Tx/Rx, Link, Outlet	
A-type USB Port	Yes	
Connectivity Port	RJ45, RJ45 (for Serial), RJ45 (for ENVIROSENSOR/Daisy Chain (In)), RJ45 (for Daisy Chain (Out))	
Environmental Sensor Supported	Yes	
Power Management Software	PowerPanel® Business (Recommended for small-medium scale management), PowerPanel® Enterprise (Recommended for large scale management)	
Supported Protocols	IPv4/v6, SNMPv1/v3, HTTP/HTTPS, TCP/IP, UDP, DHCP, NTP, DNS, SMTP, SSH, SSL, TLS, Telnet, FTP, and Syslog	
Authentication	RADIUS, LDAP, LDAPS, Windows AD	
Physical		
Installed Rack Height (U)	1	
Cord Retention Tray	Yes	
IEC Receptacle Locking	Yes	
Physical Size		
Dimensions (WxHxD) (mm.)	433 x 44 x 215	
Weight (kg.)	3.7	3.4
Environmental		
Operating Temperature (°C)	0 - 45	
Operating Relative Humidity (Non-condensing) (%)	0 - 95	
Certifications		
Certifications*	CE, FCC Class A, UL62368, EN 55032 Class A, IEC 62368	
RoHS	Yes	

*Certifications may vary according to different regions. Visit www.cyberpower.com for more information.
#All specifications are subject to change without notice.