

ALLNET LTE Mobile/Travel Router MiFi MUDI v2 GL-E750v2 "OpenWRT" with LAN-Port

>>> [Go to the shop article](#)



EAN CODE



Highlights:

- Portable/Travel Router (MiFi) with internal Battery
- internal TF Card Slot supports 1TB
- internal OLED Screen Display for LTE Signal, SSID, Password, Battery life and alert messages.
- internal 7000mAh fast charging lithium polymer battery
- OpenWRT Linux Operating System with large VPN Services like Wireguard, OpenVPN, NordVPN and many others.
- 1x LAN Fast-Ethernet Port with Docking-Adapter possible (see pictures)

Mudi V2 is a portable 4G LTE Router designed for users to protect their internet privacy during travels. It offers an internet speed of 300Mbps (2.4GHz) and 433Mbps (5GHz), with a combined maximum Wi-Fi bandwidth of 733Mbps. The device runs on GL.iNet's proprietary firmware based on OpenWrt, and is pre-installed with a comprehensive range of privacy and security features including connecting to VPN client, VPN server hosting, ad filtering, encrypted DNS, and more.

Mudi V2 (GL-E750V2) is an upgraded version of Mudi (GL-E750). The new model features a powerful chipset that supports an efficient 4G LTE connection as well as an improved 5G Wi-Fi performance. Additionally, Mudi V2 comes with a new battery with shorter charging time, ultimately bringing an enhanced internet experience to travelers.



CAT 6 Frequency Bands

Module: EM060K-G

LTE	LTE-FDD	B1/B2/B3/B4/B5/B7/B8/B12/B13/B14/B17/B18/B19/B20/B25/B26/B28/B29⓪/B30/B32⓪/B66/B71
	LTE-TDD	B34/B38/B39/B40/B41/B42/B43/B46⓪ (LAA)/B48 (CBRS)
	Up to 2 ×CA:	B2+B2/5/12/13/29⓪;B4+B4/5/12/13/29⓪; B5+B5/7/25/30/66; B7+B7/12/26/B12+B12/25/30/66; B13+B66; B25+B25/26; B30+B29; B66+B29/66; B41+B41;
	WCDMA:	B1/2/3/4/5/6/8/19

⓪: B32 is only for secondary component carrier, B46 is only for secondary component carrier.

⓪: B29 is only for secondary component carrier.

⓪: means LTE-FDD B29 support receiving only, and is only for secondary component carrier in 2×CA.

CAT 4 Frequency Bands

Module: EM05-G

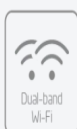
LTE	B1/2/3/4/5/7/8/12/13/14/18/19/20/25/26/28/66/71/38/39/40/41;
WCDMA	B1/2/4/5/6/8/19



4G LTE
Module



High Speed



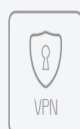
Dual-band
Wi-Fi



External
Storage



Built-in
Battery



VPN Client /
Server



Tor Anonymity



OpenWrt
Pre-installed



Global
Connectivity



DNS
Encryption

Join the Club



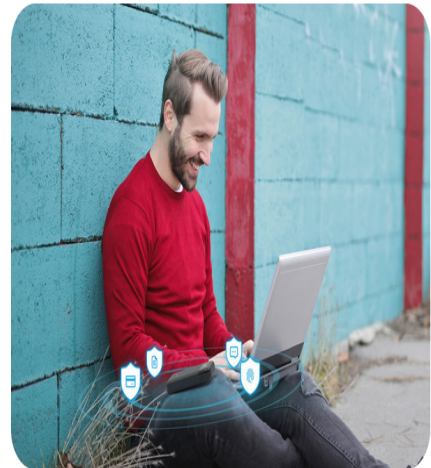
Coffee shops

Whether you're working from a cafe or just stopping by for a coffee, use Mudi V2 to establish a private internet connection and stay away from prying eyes.



Hotel rooms

Hotel Wi-Fi is not always safe. Use Mudi V2 for a private, secure connection. Also, you can save on excessive Wi-Fi fees and avoid poor internet service.



On the road

Mudi V2 meets whatever your needs are while on the road—letting you watch your favorite content, live stream, or access a network remotely.

Improved Network Reliability with Multi-WAN

Mudi V2 offers four connection methods—cellular, tethering, Wi-Fi, and ethernet. Featuring multi-WAN, the travel router supports failover and load balancing, ensuring uninterrupted internet connectivity wherever you go.



Join the Club

Best Travel Router with VPN

Protect your data with integrated VPN Client

Mudi V2 offers built-in VPN functionality to help you stay private and secure at all times. With its support for OpenVPN or WireGuard, the travel router protects your online traffic anywhere you go. All you need to do is get a VPN subscription from one of the over 30 VPN service providers supported by GLNet.

Built-in with VPN server for remote access

Mudi V2 supports running as a VPN server, allowing you to securely access your home or office network from anywhere in the world. The router supports running as a VPN client and a VPN server at the same time, meeting your needs all at once.

WireGuard



OpenVPN



* Tests conducted on a local network. Real world speeds may differ depending on your network configuration.
* OpenVPN and WireGuard speeds will be slower when running the device as a server. Results above are in client mode.

[LEARN MORE ABOUT OUR VPN SOLUTIONS](#)



Join the Club



Runs on OpenWrt for Customization

A travel router that runs OpenWrt natively, Mudi V2 gives you full control of your network and the connected devices. Mudi V2 uses proprietary firmware based on OpenWrt (v22.03.4 Kernel version 5.150.176), offering over 5,000 ready-made plug-ins and applications at your disposal. Simply browse, install, and manage packages within the router's admin panel.

Join the Club

Pocket Wi-Fi on the go

Mudi V2 gives you a private bubble of internet wherever you go, with the added peace of mind that comes from knowing your online traffic is always protected by the VPN. With its support for global carriers, rest assured Mudi V2 works wherever the road takes you.



Technical Details:

Interface	1 x USB 2.0 port 1 x Nano SIM card slot 1 x MicroSD card slot (Up to 1TB) 1 x Toggle button 1 x Power button
CPU	QCA9531, @650MHz SoC
Memory / Storage	DDR2 128MB / NOR Flash 16MB + NAND Flash 128MB
3G/4G Modem	CAT4 Module (DL/UL 150/50Mbps) or CAT6 Module (DL/UL 300/50Mbps)
LTE Antenna	2 x Internal Full Frequency Antennas (700M~2.7GHz)
Protocol	IEEE 802.11a/b/g/n/ac
Wi-Fi Speed	300Mbps (2.4GHz), 433Mbps (5GHz)
Ethernet Port	1 x FE Port (supported with the docking station)
LED	0.96-inch OLED Display
Power Input	Type-C, 5V/2A
Battery	Rechargeable 7000mAh Battery
Operating Temperature	0~35°C (32~95°F)
Storage Temperature	-20~45°C (-4~113°F)
Dimension / Weight	145 x 77.5 x 23.5mm / 285g