



ALL4176v3

6 multiple network power socket strip 10A with power measuring



Quick install guide

1. Scope of delivery:

Please check packaging and content for damages:

- Does something indicate transport damage to the packaging?
- Does the case show any traces of usage?

You must never put a damaged device into operation!

In case of doubt, contact our technical support.

Packaging content

- ALLNET® ALL4176v3
- 1x network cable
- Quick install guide

2. Standard values:

IP address	192.168.0.100
------------	---------------

Reset to factory settings

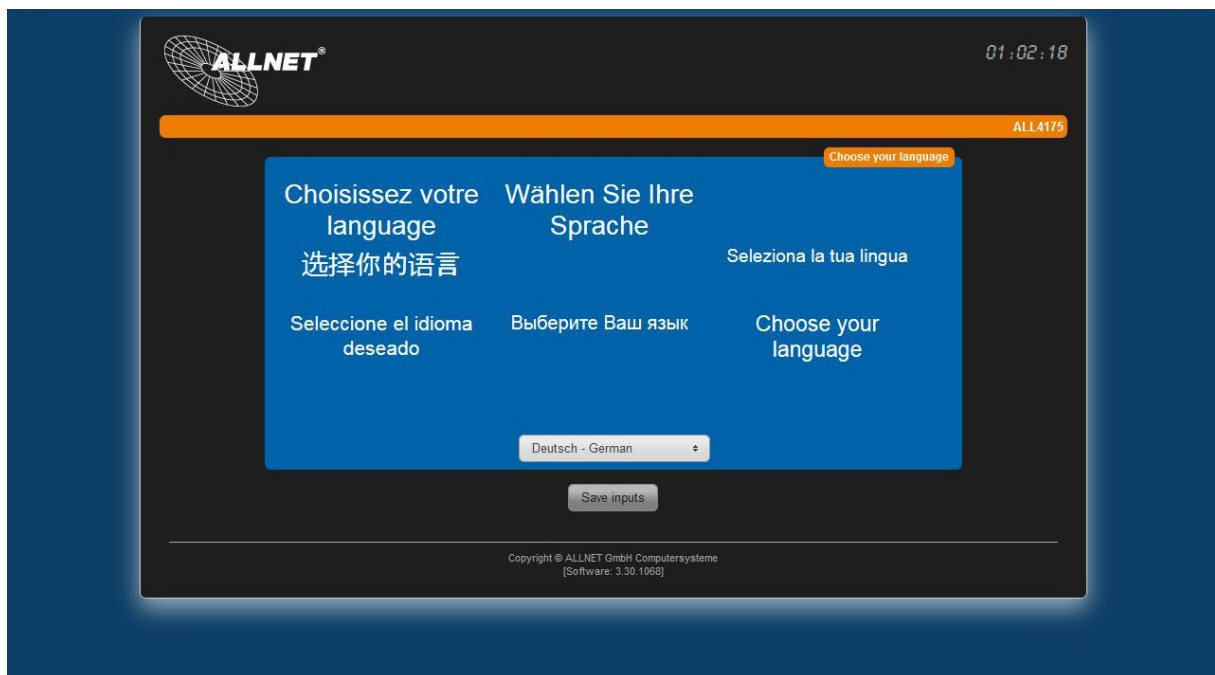
If your ALL4176v3 is due to incorrect user settings or forgotten password not accessible anymore, you can reset the device to factory settings by performing the following instructions (all settings and values will be lost):

- Disconnect the device from power.
- Press RESET button with a prick out of non-conductive material and keep button pressed
- **(The button needs to be kept pressed!)**
- Connect ALL4176v3 to power and wait about 45 seconds.
- Release RESET button.

Reset process is completed. All settings are reset to delivery status.

3. Adapt ALL4176v3 to your network

- a. Connect your ALL4176v3 via the attached LAN cable to the network. Make sure you hear the connectors snap.
- b. ALL4176v3 communicates with connected components via the TCP/IP protocol. The PC/MAC has to be located in the same network segment as the ALL4176v3, so the ALL4176v3 can be recognized by the PC/MAC. The ALL4176v3 has following IP address by default: 192.168.0.100 - no user name, no password.
- c. Now set the PC/MAC temporary to a free IP address between 192.168.0.1 and 192.168.0.254 (192.168.0.100 is already occupied by the ALL4176v3). In perfect case you can set a second IP address for this sector with 192.168.0.xxx for your PC network interface.
- d. By typing the address 192.168.0.100 into your web browser, the first page for language settings turns up:

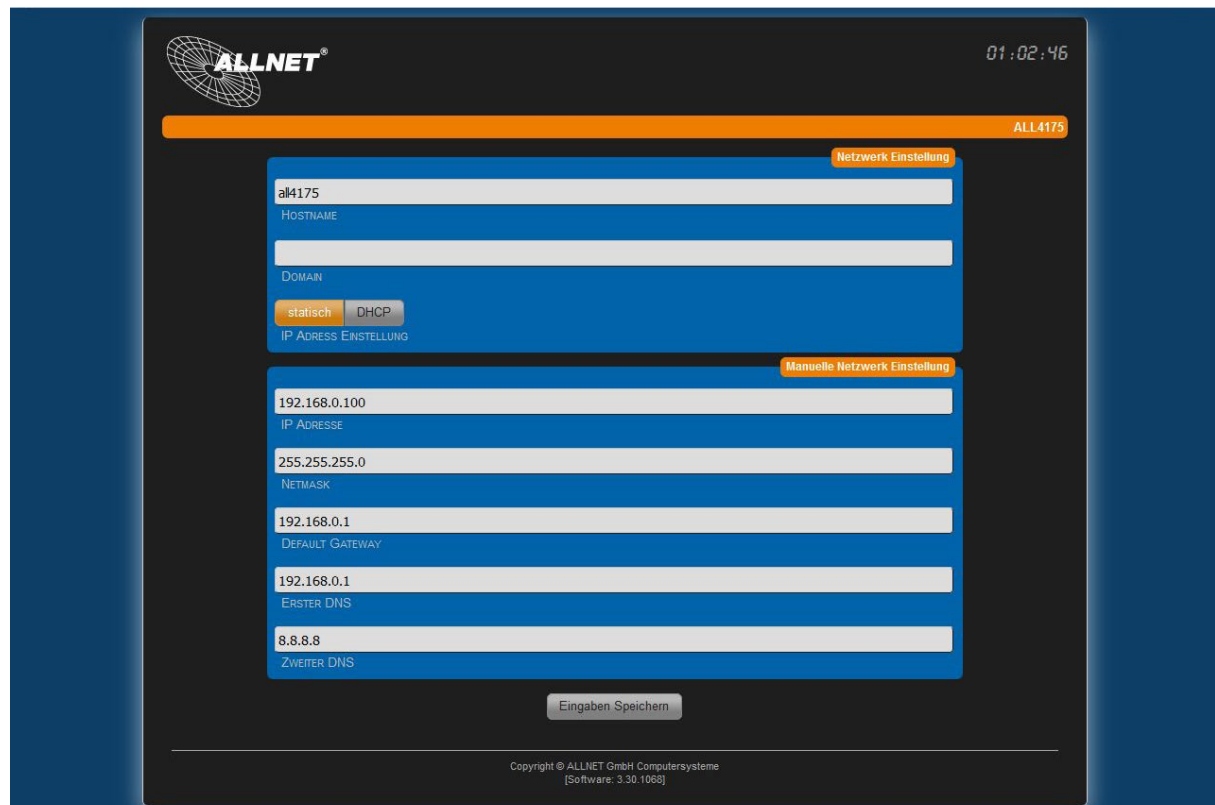


- e. Choose the right language from the dropdown menu and save your settings. The next configurations item appears automatically.
- f. Now you can assign an IP address from your network segment to the ALL4176v3.

Statically: Here IP settings can be defined manually.

DHCP: ALL4176v3 chooses an IP from your router automatically.

Confirm the settings with "save entries".



- g. The device adopts the settings. This process will take 10 seconds. When done, the page reloads with your defined IP address.
- h. Now, a page with time settings turns up, where you can define an own timeserver, use a listed server or set up the time manually.

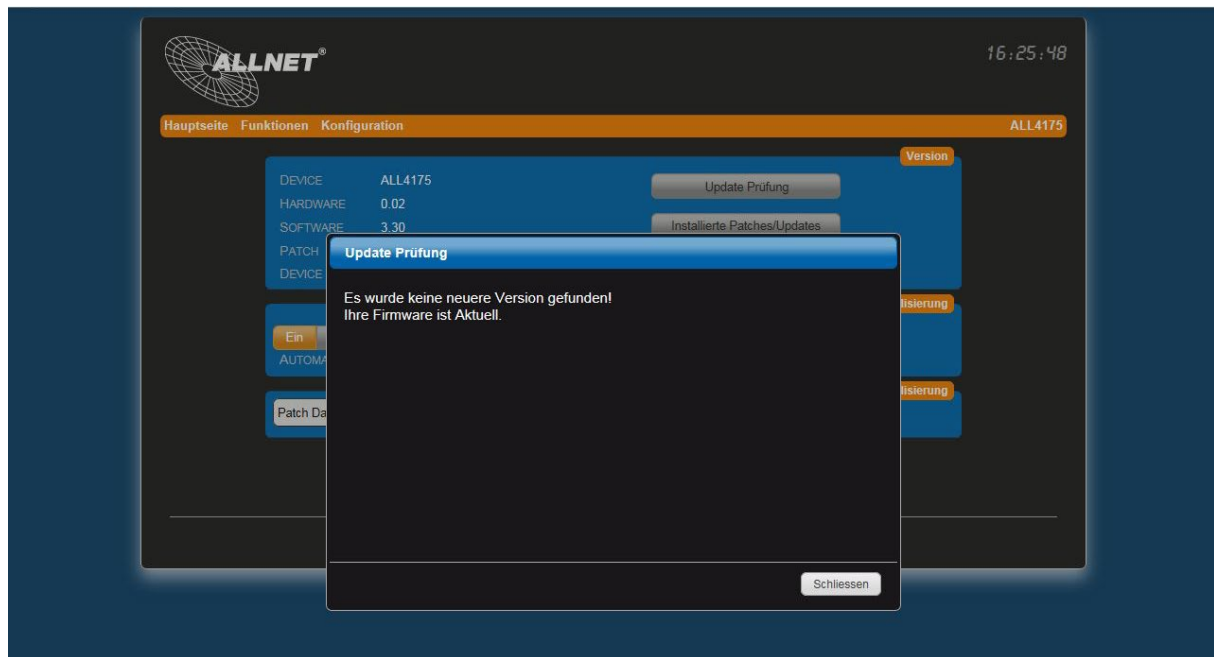
The screenshot shows the ALLNET configuration web interface. At the top, there is a navigation bar with 'Hauptseite', 'Funktionen', and 'Konfiguration'. A red warning box at the top right states: 'Achtung Datum und Uhrzeit sind nicht korrekt! Aufzeichnungsfunktionen sind Deaktiviert!'. Below the navigation bar, the 'Konfiguration' section is active, showing 'Zeitzone' (Europe, Berlin) and 'Zeitserver' (Aktiviert). The 'Zeitserver' section lists four NTP servers: ptbtime1.ptb.de, ptbtime2.ptb.de, ntp0.fau.de, and pool.ntp.org. Below this, there is a 'Zeit Anzeige' section with 'SYSTEM ZEIT' (01:05:09) and 'SYSTEM DATUM' (01.01.1970). At the bottom, there is a 'Eingaben Speichern' button. The footer contains copyright information: 'Copyright © 2011-2016 ALLNET GmbH Computersysteme [Software: 3.30.1068]'.

- i. Secure your settings with "save entries".

4. Checking for updates

When the IP configuration is done, an update to the latest software version is recommended. The update can be found in "configuration" -> "update settings". By clicking on "Checking for updates" you'll receive one of the following notifications:

- a. No later versions found
- or
- b. Install update



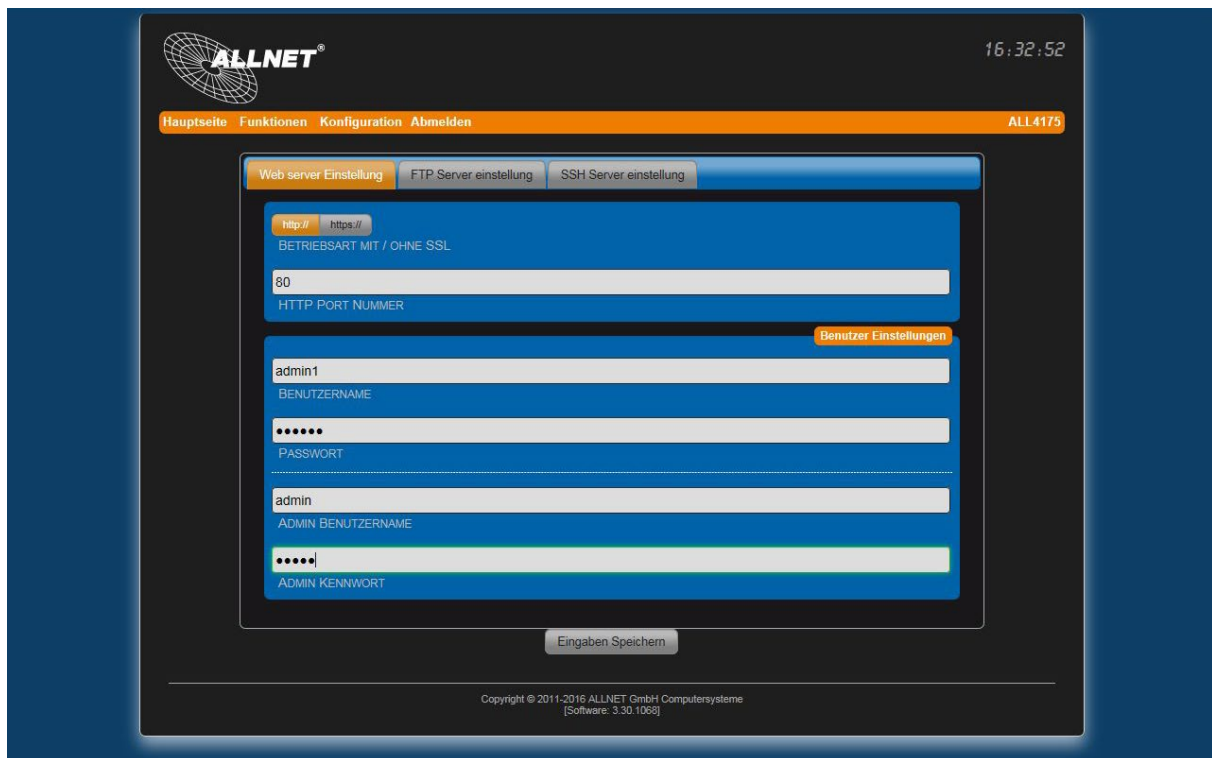
Perform the update check several times until you receive the notification from the picture above.

5. Create user

You should configure an Admin account, so that only you have access onto ALL4176v3's setups.

Choose "configuration" -> "web server and user"

Here you can create an Admin user and a normal user. The Admin user has full access to the web interface, the normal user may only see and operate the main page.

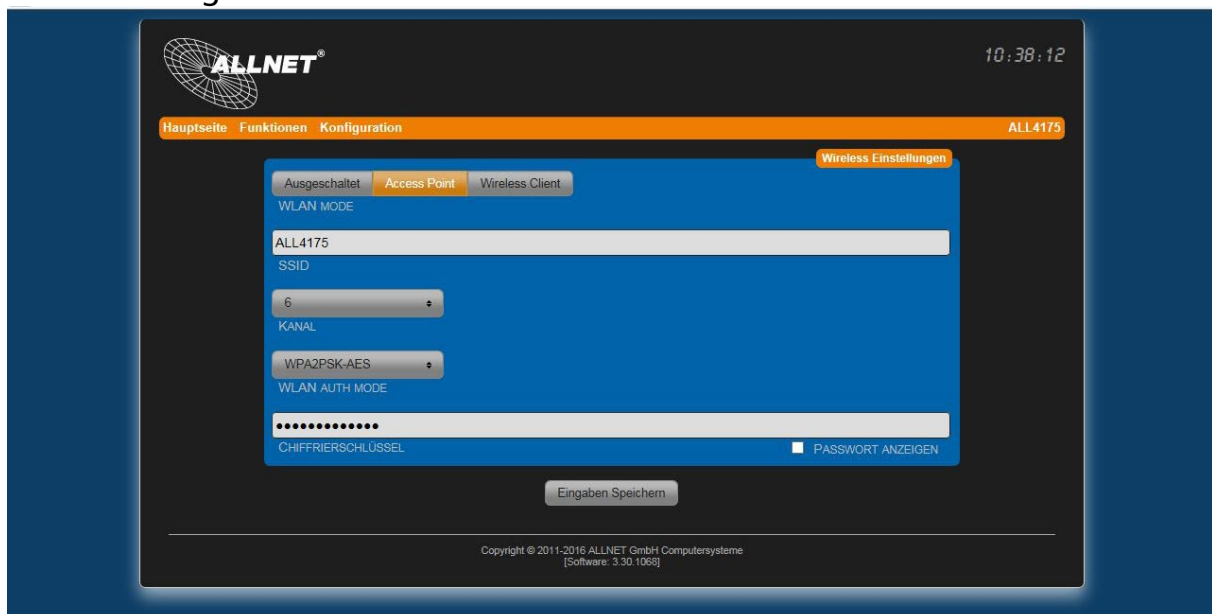


6. Access-Point configuration

The ALL4176v3 can also be configured as an own access point.

In "configuration" -> "Wi-Fi settings" the access point mode can be set up.

SSID: Register any desired name for the network here. This name will be shown after scanning for networks.



Channel: Choose the transmitting channel here.

Wi-Fi auth. mode: Choose encryption mode here. WPA2PSK-AES is recommended.

Cryptographic key: Enter an arbitrary password here. The key is inquired by connecting to the ALL4176v3. Choose a secure password with at least 8 characters.

Secure your settings with "save entries".

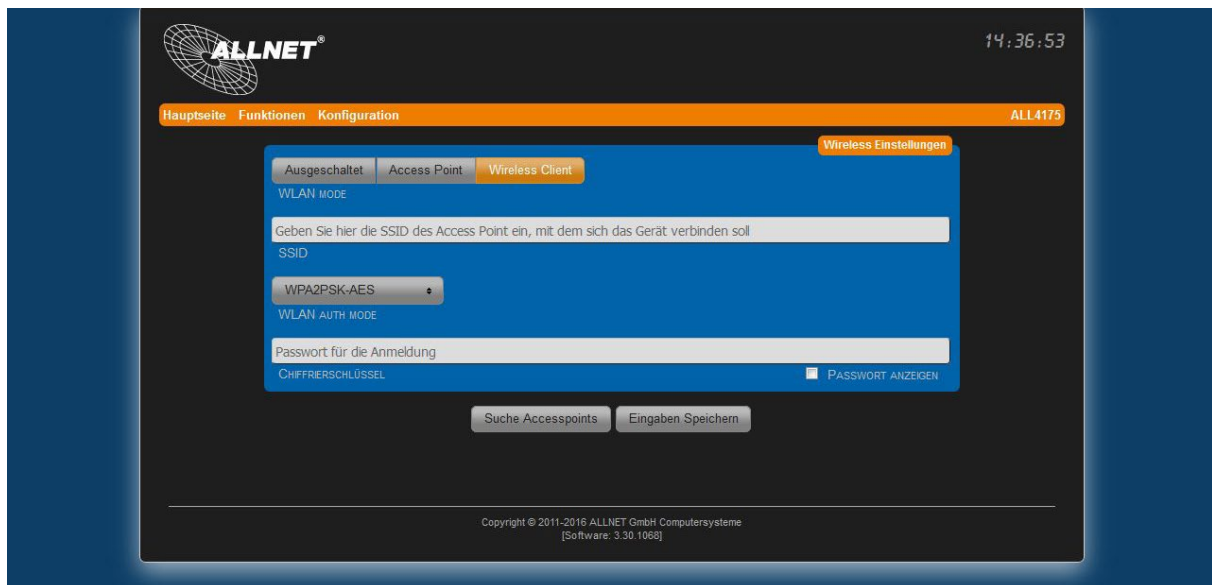
The entries are confirmed. This process takes 120 seconds.

7. Wireless-Client configuration

The ALL4176v3 may also be connected to an existing Wi-Fi network.

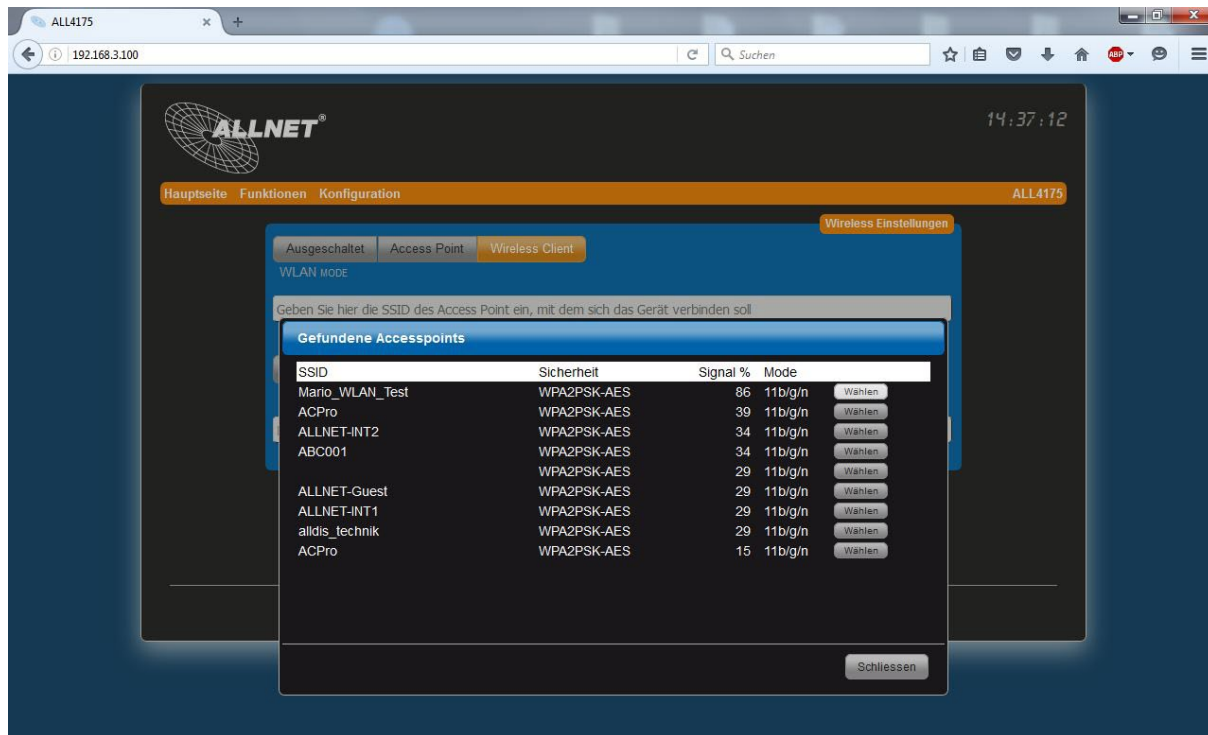
In "configuration" -> "Wi-Fi settings" you can set up the Wi-Fi connection.

Choose "Wireless Client" to connect the device to an existing network. Click "search for access points" to find your Wi-Fi network.

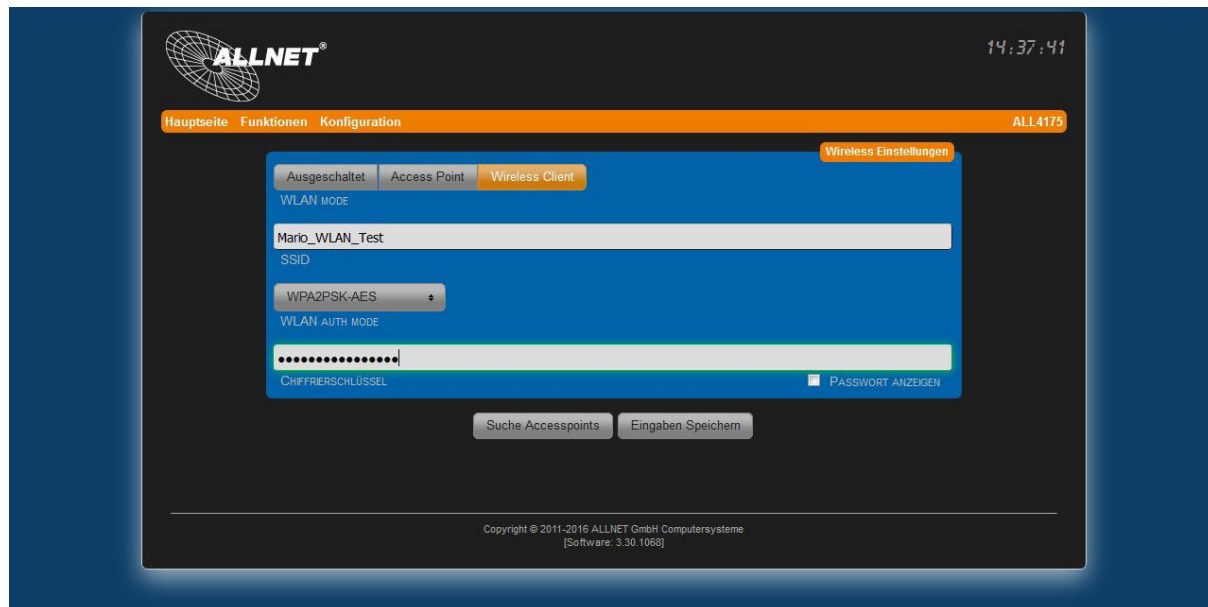


All surrounding networks will be displayed. Select your network and confirm by clicking "choose".

"SSID" and "Wi-Fi auth. mode" will be filled automatically. You only need to type in the Wi-Fi key and confirm the settings with "save entries". The device takes all the settings within a duration of 120 seconds.



The ALL4176v3 can be reached at the registered IP address.



IMPORTANT: After 120 seconds, disconnect the LAN cable to avoid network conflicts.

NOTICE: The Wi-Fi you wish to connect shall not have any space character in its SSID. Otherwise a connection will not be established.



NOTE

For further instructions regarding the devices functions and WebUI refer to <https://msr.allnet.de>

Safety Instructions

Please be sure to observe the following instructions:

General notes



RISK

- Only use the device for the purpose it was designed.
- Only use the device as described in the Quick Start Guide or manual.
- Any other use is considered improper and may result in property damage.
- Neither ALLNET® nor the dealer accepts liability for damage caused by improper or incorrect use.
- All safety instructions must be read through.
- The manual should be kept for future reference.

Mounting instructions



WARNING

- NEVER place the device near radiators, air conditioners or water sources. This greatly increases the risk of electric shocks, short circuits or fire.
- The humidity should be between 20% and 80%, otherwise condensation may occur.
- Protect the device from direct sunlight, extreme heat, open fire and dust. Otherwise, the risk of electric shocks, short circuits or fire increases.
- Never place the device on surfaces that are sensitive to heat.
- Do not use the device in damp rooms and under no circumstances in potentially explosive areas.
- The device is designed for use in enclosed spaces.

Operating notes



ATTENTION

- Operate the device only with the voltage indicated on the device or on the included power supply unit.
- Any batteries present are only to be replaced with the same or an equivalent type.
- Do not use obviously defective devices. If the unit does not operate normally – especially if unusual odors or noises occur – unplug the power cord from the socket immediately.

- Never expose the device to direct sunlight during operation.
- Never operate the device near sources of heat.
- Protect the device from moisture, dust, liquids and vapors.
- Never open the device.
- Work on the device may only be carried out when the device has been disconnected from its power source.
- The device may only be operated by persons who have read the instructions or have been instructed in its operation by a competent person.

Instructions for repair and maintenance.



RISK

- Repairs may only be carried out by trained, authorized personnel.
- Regular maintenance is not necessary.
- Never open the device.
- For cleaning work, disconnect the device from its power source.
- Do not use any cleaning agents containing solvents for cleaning, but only a soft, dry antistatic cloth.
- It is forbidden to make any modifications to the unit.
- Damaged devices or damaged components may no longer be used.



NOTE

ALLNET GmbH Computersysteme declares that the device **ALL4176v3** is in compliance with the essential requirements and other relevant provisions of Directive 2014/30/EU. The Declaration of conformity can be found under this link: <http://ce.allnet.de>

ALLNET GmbH Computersysteme
Maistrasse 2
82110 Germering

Tel.: +49 (0)89 894 222 - 22
Fax: +49 (0)89 894 222 - 33
Email: info@allnet.de



CE Marking is the symbol as shown above. The letters "CE" are the abbreviation of the French phrase "Conformity European" which literally means "European Conformity". The terms initial use was as the "EC Mark". With the Directive 93/68/EEC from 1993 it was officially replaced by the "CE Marking". Nowadays the "CE Marking" is used in all EU official documents.



NOTE



This symbol on the product or on its packaging indicate that this product is not to be disposed with your other household waste. Instead, it is your responsibility to dispose of your waste equipment by handing it over to a designated collection point for the recycling of electrical waste or electronic equipment. The separate collection and recycling of your waste equipment will help to conserve natural resources and ensure that it is recycled in a manner that protects

DE13101093 human health and environment. For more information about where you can dispose your waste equipment, please contact your local city office, your household disposal service or the shop where you purchased the product.



This recycle logo indicates that this product can be recycled, not that the product has been recycled. It is possible that this device will not be accepted in all recycling collection systems.



The recycling codes are used to guarantee the correct handling of waste. It is an internationally recognized classification that assigns a unique number to each waste material. This number provides information on how the waste material can best be recycled to ensure the least possible impact on the

environment. The code PAP 22 describes these instructions for the device, which were printed on paper. They should be disposed of through the usual recycling channels, such as waste paper collection points.



The RoHS directive aims to restrict certain dangerous substances commonly used in electronic and electronic equipment. This RoHS compliant symbol indicate the component is tested for the presence of Lead (Pb), Cadmium (Cd), Mercury (Hg), Hexavalent chromium (Hex-Cr), Polybrominated biphenyls (PBB), and Polybrominated diphenyl ethers (PBDE). For Cadmium and Hexavalent chromium, there must be less than 0.01% of the substance by weight at raw homogeneous materials level. For Lead, PBB, and PBDE, there must be no more than 0.1% of the material, when calculated by weight at raw homogeneous materials. Any RoHS compliant component must not have more than 100 ppm of mercury and the mercury must not have been intentionally added to the component.