

# ALLNET Network Appliance NS6001 Celeron 3855U 1HU - Barebone

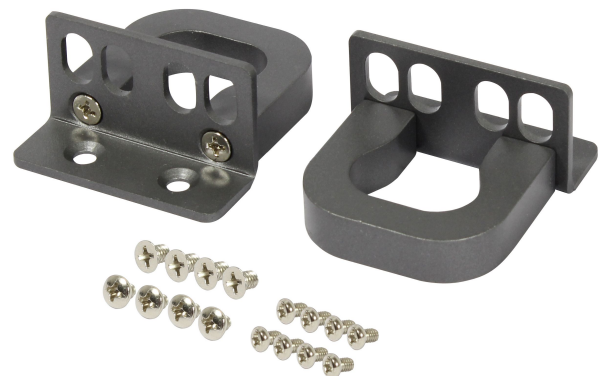
## EAN CODE



Processor	CPU	Integrated Intel® Celeron 3855U dual core 2 thread processor
	Frequency	1.6GHz
	Power	TDP 15W
	Chipset	Based on Intel® skylake-u SOC platform
	BIOS	64Mb Flash ROM
RAM	RAM	DDR4 2133MHz
	Max Capacity	32GB
	Slot	2*SODIMM
Display	Graphics	Intel® HD Graphics 510
	Graphics Engine	DirectX12,OpenGL4.4
	HDMI	N/A
	CRT	1*VGA ,1920X1200@60Hz
	Display	1*VGA
Ethernet	LAN1~LAN4	4*Intel WGI211AT Gigabit Ethernet, support Wake On LAN/PXE
	LAN5~LAN6	2*Intel WGI211AT Gigabit Ethernet,, support network wake up, PXE/ POE function

Audio	Audio	N/A
I/O Port	COM Port	1* CISCO standard RS232 serial
	USB	2* USB2.0
	Optical fiber	N/A
	Phoenix Connector	N/A
Expansion	Mini PCIE	1* Mini PCIE slot,support WIFI module
Storage	SATA	1*2.5"HDD Expansion or 1*3.5"HDD Expansion
	MSATA	1* MSATA SSD, transmission rate up to 3Gbps
OS Support	Microsoft Windows	Windows 7/Windows10,64bit(not include OS code)
	Linux	Ubuntu
Power Supply	Power Type	External open power supply
	Voltage Input	AC 110~220V
	Power Output	AC TO DC,60W
Structure	Structure	1U standard case, high quality galvanized steel
	Installation	1U standard rack
	Dimension	430mm*281mm*45mm
Environment	Working Temp.	-10°C ~ 60°C
	Storage Temp.	-20°C ~70° C
	Relative Humidity	5%-95% relative humidity, non-condensing
	Working Vibration	0.5g rms/5-500HZ/random/operating

## Images supplémentaires



## Accessoires

No. d'article	Désignation
201736	MEM So-DIMM2666 DDR4 4GB Micron
209782	SSD SATA - 2,5" 120GB PNY CS900