



ALL-WA0300AC

Wireless AC USB WLAN Stick Dongle



Quick Install Guide

1. Radio frequencies & transmission power

Frequency	Frequency range	max. transmit power
2,4 GHz	2412 ~ 2472 MHz	80mW
5 GHz	5180 ~ 5825 MHz	80mW

2. Driver & Software-Installation

1. Insert the supplied CD into your computer.
2. Open the driver folder and run the *.EXE file.
3. The installation of the drivers is now performed.
→ This may take a few minutes.
4. After the installation has been completed, the installation window can be closed by clicking on "Finish".



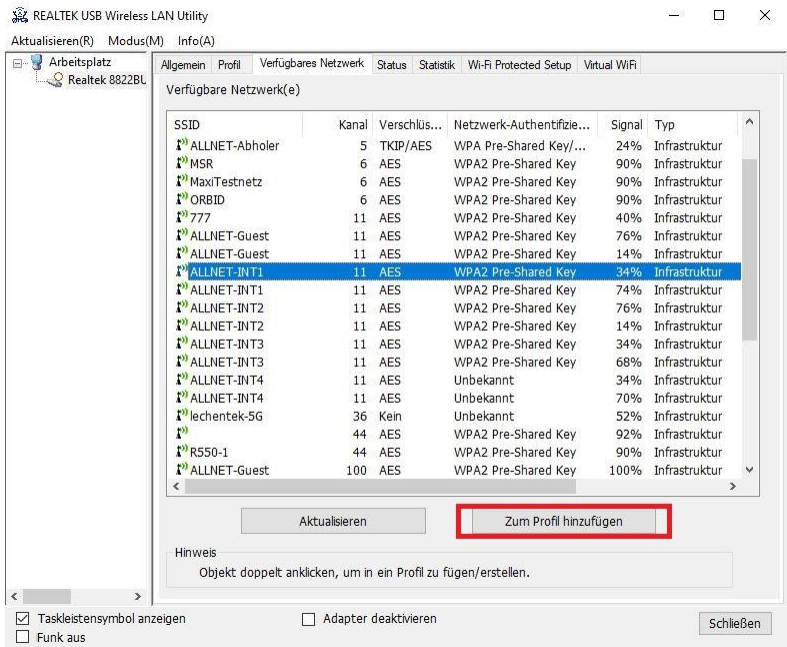
5. The „REALTEK USB Wireless LAN Utility“ icon



should now be visible on the desktop.

3. Connecting via WLAN

1. Connect the ALL-WA0300AC to a USB port of your PC and start the software.
2. Click on the the „Available Network“ tab and select the network you want to connect to.



3. Click on the „Add to Profile“ button, enter your Wi-Fi password below and confirm the information with “OK”.

Funknetzwerk-Eigenschaften: ✕

Profilname:

Netzwerkname (SSID):

Kanal: ▾

Drahtlosnetzwerksicherheit

Dieses Netzwerk erfordert einen Schlüssel für Folgendes:

Netzwerkauthentisierung: ▾

Datenverschlüsselung: ▾

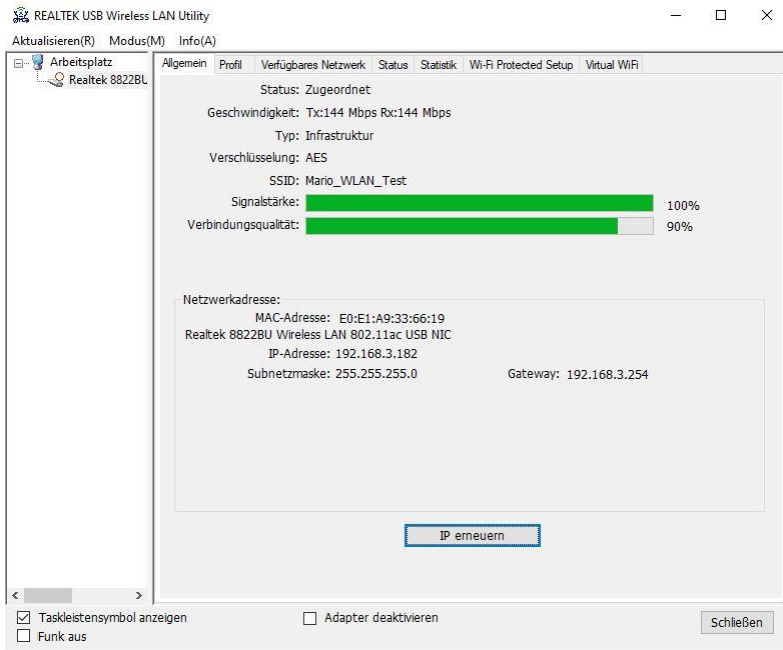
ASCII KENNWORT

Schlüsselindex ▾


Netzwerkschlüssel:

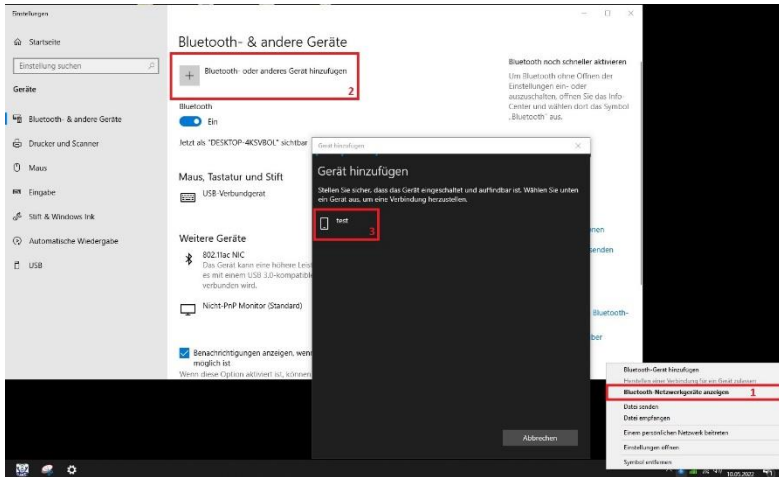
Netzwerkschlüssel bestätigen:

4. The connection is established and in the “General” tab you will see information about signal strength or connection quality.



4. Connecting via Bluetooth

1. Right-Click the Bluetooth icon  in the notification area of the taskbar.
2. Select „Show Bluetooth network devices“, click “Add Bluetooth or other device” and select the device you want to connect to.



3. The connection is established the connection request must be confirmed on both devices.

ALLNET GmbH Computersysteme declares that the device **ALL-WA0300AC** is in compliance with the essential requirements and other relevant provisions of Directive 2014/53/EU. The Declaration of conformity can be found under this link:

<http://ce.allnet.de>

ALLNET GmbH Computersysteme
Maistrasse 2
82110 Germering

Tel.: +49 (0)89 894 222 - 22

Fax: +49 (0)89 894 222 - 33

Email: info@allnet.de



CE Marking is the symbol as shown on the top of this page. The letters "CE" are the abbreviation of French phrase "Conformity European" which literally means "European Conformity". The term initially used was "EC Mark" and it was officially replaced by "CE Marking" in the Directive 93/68/EEC in 1993. "CE Marking" is now used in all EU official documents.



This symbol on the product or on its packaging indicates that this product must not be disposed of with your other household waste. Instead, it is your responsibility to dispose of your waste equipment by handing it over to a designated collection point for the recycling of waste electrical and electronic equipment. The separate collection and recycling of your waste equipment at the time of disposal will help to conserve natural resources and ensure that it is recycled in a manner that protects human health and the environment. For more information about where you can drop off your waste equipment for recycling, please contact your local city office, your household waste disposal service or the shop where you purchased the product.

This recycle logo indicates that this product is capable of being recycled, not that the product has been recycled or will be accepted in all recycling collection systems.



The RoHS directive aims to restrict certain dangerous substances commonly used in electronic and electronic equipment. This [RoHS compliant](#) symbol indicates the component is [tested](#) for the presence of Lead (Pb), Cadmium (Cd), Mercury (Hg), Hexavalent chromium (Hex-Cr), Polybrominated biphenyls (PBB), and Polybrominated diphenyl ethers (PBDE). For Cadmium and Hexavalent chromium, there must be less than 0.01% of the substance by weight at raw homogeneous materials level. For Lead,

PBB, and PBDE, there must be no more than 0.1% of the material, when calculated by weight at raw homogeneous materials. Any RoHS compliant component must have 100 ppm or less of mercury and the mercury must not have been intentionally added to the component.



Safety Warnings

For your safety, be sure to read and follow all warning notices and instructions.

- Do not open the device. Opening or removing the device cover can expose you to dangerous high voltage points or other risks. Only qualified service personnel can service the device. Please contact your vendor for further information.
- Do not use your device during a thunderstorm. There may be a risk of electric shock brought about by lightning.

- Do not expose your device to dust or corrosive liquids.
- Do not use this product near water sources.
- Make sure to connect the cables to the correct ports.
- Do not obstruct the ventilation slots on the device.