

## ALLNET Point-to-Point Coax 8 Port Master Chassis/Amplifier EOC 100 zbh. EOC G.hn WIFI flush-mounted box/pass-through box "ALL-GHN108S-100-WIFI"

>>> [Go to the shop article](#)



EAN CODE

An existing coaxial cable is used for simultaneous transmission of DVB-C and network data.

The EOC WLAN flush-mounted socket "ALL-GHN108S-100-WIFI" is a C-through socket with integrated 2.4 GHz WLAN (Wi-Fi 4 2x2 802.11n) and has 2 antennas (2T2R).

The coax socket provides a broadband cable signal (108 - 860 MHz) and can be used with a standard receiver.

The TV signal is output via the coax socket, the network data via WLAN.

The networking of the individual flush-mounted boxes/G.hn modules takes place automatically.

The EOC WLAN "ALL-GHN108S-100-WIFI" is operated via remote power supply by a master/amplifier "ALL-GHN108M-Coax-100". It can then power 4 subsequent EOC 100 "ALL-GHN108S-100-UP-Dose" or EOC WIFI ALL-GHN108S-100-WIFI.

The EOC WLAN "ALL-GHN108S-100-WIFI" can be installed in a single flush-mounted box or in a multiple flush-mounted box. Each EOC WLAN "ALL-GHN108S-100-WIFI" can exchange data with any other flush-mounted box.

### Recommended application:

Building upgrade with gigabit Ethernet with existing coaxial cabling and on a limited budget.

- Home users
- Small company networks
- Hotels
- Hospitals



- Sanatoriums
- Retirement homes
- Renovation of old buildings

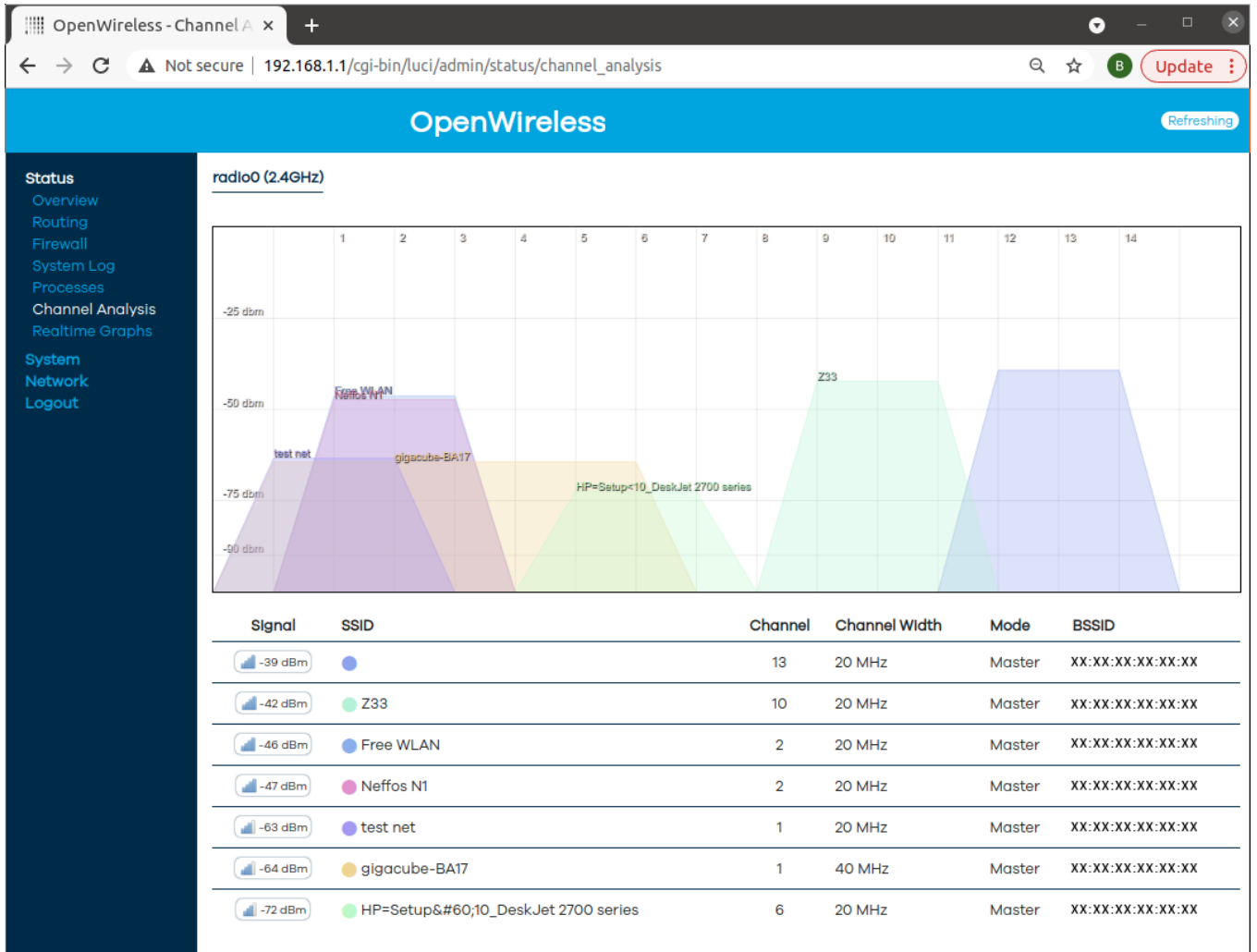
#### Coax

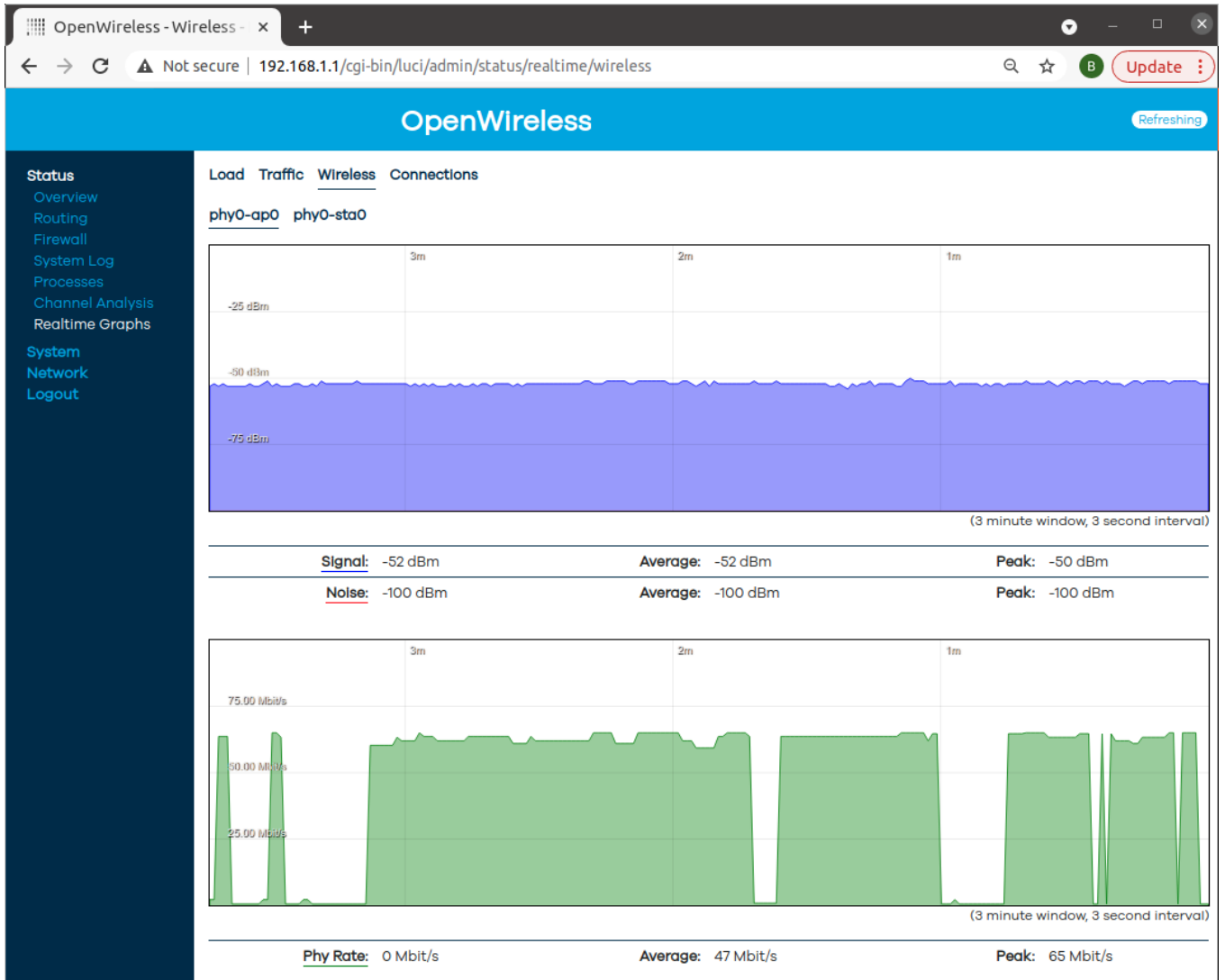
- C-throughput in-wall socket
- Can be integrated into single outlets and multiple outlets
- Frequency range 2 – 199 MHz
- Network standard: G.Hn
- Data rate Gross: 2000 Mbps
- Data rate Net: 1700 Mbps
- Attenuation 300 – 860 MHz: -2 dB (16 db coupling)
- Attenuation 300 – 860 MHz: -3 dB (10 db coupling)
- Coupling: 10 db or 16 dB
- Hardware encryption : AES 128-bit
- Quality of Service: VLAN/TOS/Packet Classifier/Virtually perfect transmission with IPTV
- Remote service: TR-069 remote management (option)

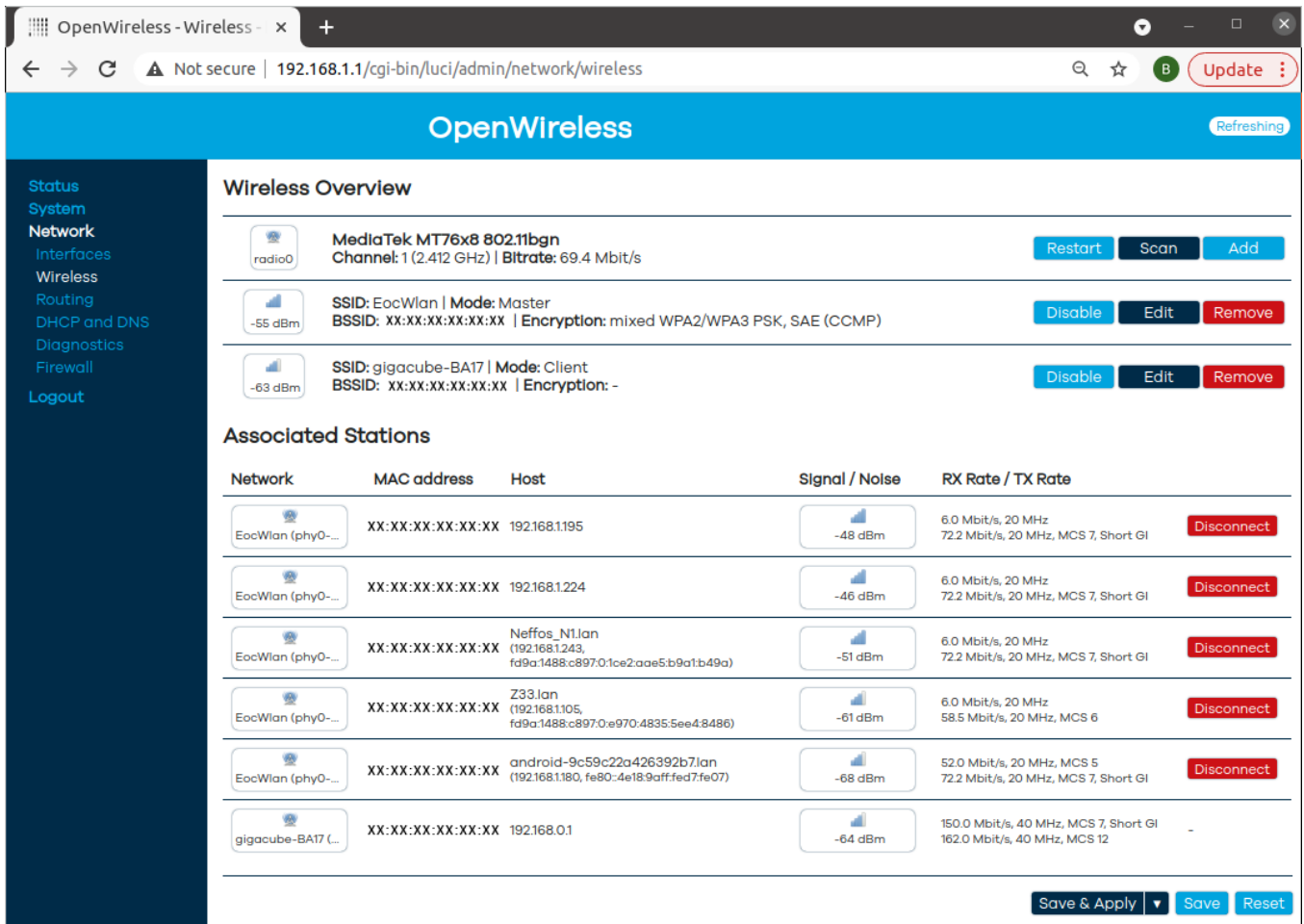
- **Coax**

- C-throughput in-wall socket
- Can be integrated into single outlets and multiple outlets
- Frequency range 2 – 199 MHz
- Network standard: G.Hn
- Data rate Gross: 2000 Mbps
- Data rate Net: 1700 Mbps
- Attenuation 300 – 860 MHz: -2 dB (16 db coupling)
- Attenuation 300 – 860 MHz: -3 dB (10 db coupling)
- Coupling: 10 db or 16 dB
- Hardware encryption : AES 128-bit
- Quality of Service: VLAN/TOS/Packet Classifier/Virtually perfect transmission with IPTV
- Remote service: TR-069 remote management (option)

Only suitable for DVB-C wiring  
Satellite wiring is not supported







The screenshot shows the OpenWireless web interface. The top navigation bar includes 'Status', 'System', 'Network', 'Interfaces', 'Wireless', 'Routing', 'DHCP and DNS', 'Diagnostics', 'Firewall', and 'Logout'. The main content area is titled 'Wireless Overview' and displays configuration for 'radio0' (MediaTek MT76x8 802.11bgn) and two wireless networks: 'EocWlan' (Master mode) and 'gigacube-BA17' (Client mode). Below this is a table of 'Associated Stations' with columns for Network, MAC address, Host, Signal/Noise, and RX Rate/TX Rate. At the bottom right, there are 'Save & Apply', 'Save', and 'Reset' buttons.

## Technischen Daten:

Software:	openWRT 21.02.0
CPU:	MIPS24KEc 580 MHz
RAM:	64 MB RAM
Flash:	32 MB
Crypto:	AES 128/256
Wi-Fi4:	Datenrate 2x 150 Mbit/s (brutto) 2x2 802.11n
Frequency:	2.4 GHz
Antenna:	2T2R



## Accessories

Part No.	Name
193132	ALLNET Point-to-Point Coax 8 Port Master Chassis/Amplifier EOC 100 without modules incl. power supply "ALL-GHN108M-Coax-100"
221229	ALLNET Point-to-Point Coax 8 Port Master Chassis/Amplifier EOC 100 zbh. EOC G.hn module for chassis 100MHz
221230	ALLNET Point-to-Point Coax 8 Port Master Chassis/Amplifier EOC 100 zbh. EOC G.hn flush-mounted box/through box "ALL-GHN108S-100-UP socket