

ALLNET Switch full managed 52 Port Gigabit 400W / 48x PoE+ /

>>> [Go to the shop article](#)



EAN CODE



ALLNET Switch full managed 52 Port Gigabit 400W / 48x PoE+ / 4x SFP+ 10G / 19" / "ALL-SG8652PM-10G"

Highlights:

- 48 ports Gigabit Layer2+ switch architecture (ports 1~48).
- 4 ports SFP+ 10G slots compatible for optional GBICs (ports 48~52).
- Supports various PoE management functions,
- Support L2+ Switching features including 802.1Q VLAN, Mirroring, Port isolation, IGMP Snooping, DHCP Snooping, LLDP, POE+ management, IP Source Guard, ARP inspection, ACLs etc.
- Support spanning tree STP(802.1D) and RSTP(802.1W) and MSTP(802.1s).
- Support enhanced management through WEB, CLI, TELNET, SSH, SNMP.
- Support cable diagnosis and SFP DDM.
- Support PoE management, like PoE schedule, PoE PD-alive.
- Support G.8032 quick ring protocol. Self-recovery time <20ms.
- Support DDM, SFP digital diagnostics monitoring
- Support IPV4 and IPV6 static routing functions
- Support memory and CPU monitoring
- 4KV surge protection, 6KV contact/8KV air protection
- Max. 400W PoE-Budget
- 19" angle or wall/table mounting possible

ALLNET ALL-SG8652PM-10G is a Layer 2+ managed Gigabit PoE Switch that features intelligent PoE functions to improve the availability of critical business applications. It provides IPv6/IPv4 management and built-in L2+

Gigabit Switching engine along with 48*10/100/1000BASE-Tports featuring 30-watt 802.3at PoE+ and 4*10G SFP+ fiber slots. With a total power budget up to 400W for different kinds of PoE applications, can provides quick, safe and cost-effective Power over Ethernet network solutions to security IP surveillance for small businesses and enterprises.

The ALL-SG8652PM-10G is programmed for advanced switch management functions such as 802.1Q VLAN and Q-in-Q VLAN, Multiple Spanning Tree protocol (MSTP), loop and BPDU guard, IGMP snooping, and MLD snooping. Also, the Link Layer Discovery Protocol (LLDP) is the Layer 2 protocol included to help discover basic information about neighboring devices on the local broadcast domain.

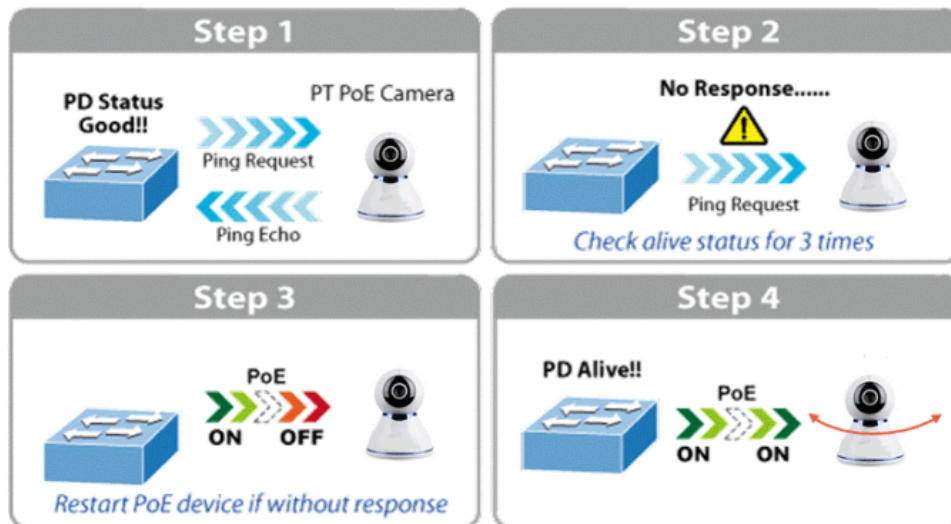
Rich PoE Management Function

Being the managed PoE switches for CCTV surveillance, wireless and VoIP networks, ALL-SG8652PM-10G features the following special PoE management functions:

- PoE PD-alive check
- Scheduled power rebooting
- PoE schedule
- PoE usage monitoring
- Soft-reboot PoE Non-stop
- PoE port power feeding priority

Smart PoE PD-Alive Check

ALL-SG8652PM-10G can be configured to monitor connected PD status in real time. Once the PD stops working and responding, the PoE switch will resume the PoE port power and bring the PD back to work. They will greatly enhance the network reliability through the PoE port resetting the PD's power source and reducing administrator management burden.

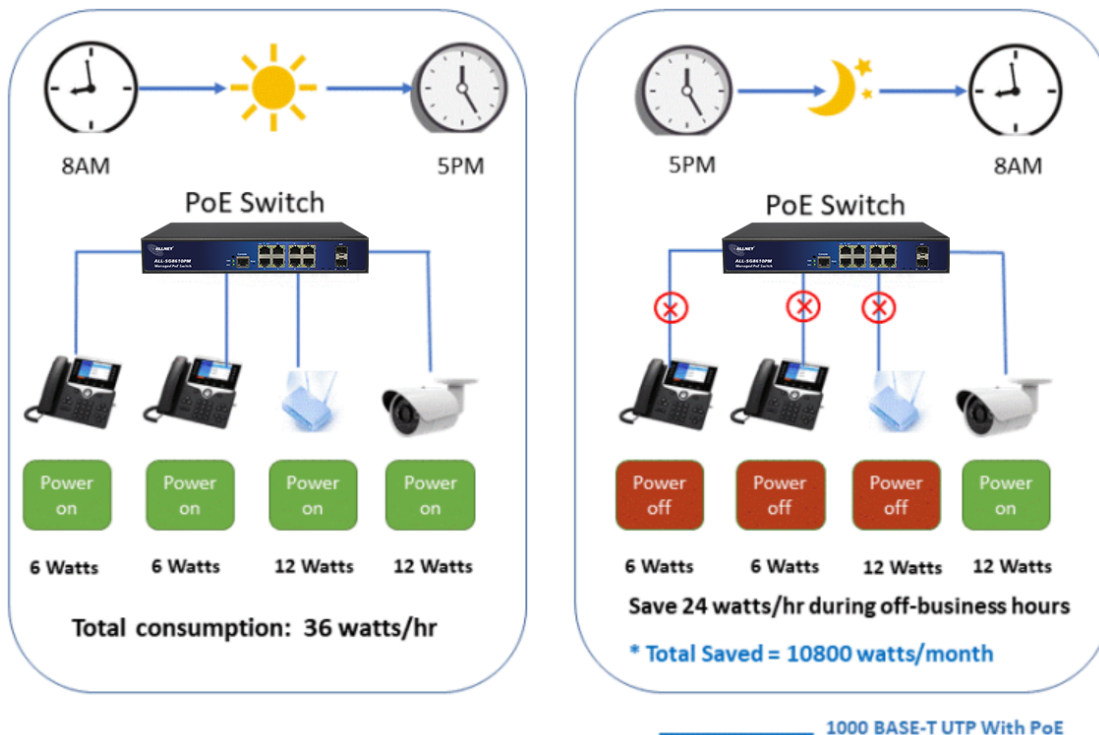


Scheduled Power Rebooting

ALL-SG8652PM-10G allows each of the connected PoE IP cameras or PoE wireless access points to reboot at a specified time each week. Therefore, they will reduce the chance of IP camera or AP crash resulting from buffer overflow.

PoE Schedule for Energy Saving

For energy saving and environmental protection purpose, ALL-SG8652PM-10G can effectively control the power supply besides their capability of giving high watts power. The PoE schedule function helps to enable or disable PoE power feeding for each PoE port during specified time intervals and it is a powerful function to help SMBs or enterprises save power and money.



PoE Usage Monitoring

Via web interface, ALL-SG8652PM-10G enables the administrator to monitor the status of the power usage of each connected PD in real time. Thus, they greatly enhance the management efficiency of the facilities.

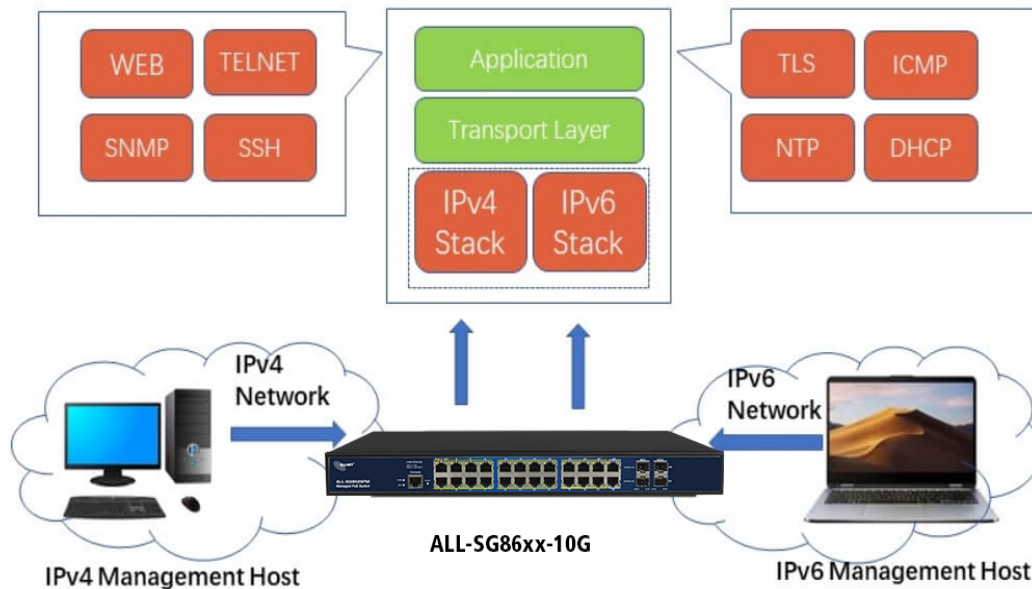
10Gbps Uplink Capacity for Big Bandwidth Application

10G Ethernet is a big leap in the evolution of Ethernet. The 10G SFP+ slots support dual-speed 10GBASE-SR/LR or 1000BASE-SX/LX, meaning the administrator now can flexibly choose the suitable SFP/SFP+ transceiver according to the transmission distance or the transmission speed required to extend the network efficiently. It is a cost-effective solution for SMB network to achieve the maximum performance of the 10G networks

Solution for IPv6 Networking

With the IPv6/IPv4 dual stack and other management functions, the ALL-SG86xxPM-10G series is the best

choice for IP CCTV surveillance, VoIP and wireless solution providers to develop the IPv6 network. Meanwhile they help the SMBs to upgrade their network infrastructures to the IPv6 era without any extra investment.



Robust Layer 2 Features

ALL-SG8652PM-10G can be programmed for advanced switch management functions, such as port aggregation, Q-in-Q VLAN, Spanning Tree Protocol, QoS, bandwidth control, ERPS IGMP/MLD snooping etc. The ALL-SG86xxPM-10G series allows the operation of a high-speed trunk combining multiple ports.

Powerful Security Functions

ALL-SG8652PM-10G provides a comprehensive access control list (ACL) for enforcing security to the edge. It can be used to restrict to network access by denying packets based on source and destination IP address, TCP/UDP port number or defined typical network applications. Its protection mechanism also comprises 802.1x Port-based and MAC-based user and device authentication. With the private VLAN function, communication between edge ports can be prevented to ensure user privacy.

Enhanced Security and Traffic Control

ALL-SG8652PM-10G supports DHCP Snooping, IP Source Guard and Dynamic ARP Inspection functions to prevent IP snooping from attack and discard ARP packets with invalid MAC address. The network administrator can now construct highly-secure corporate networks with considerably less time and effort than before.

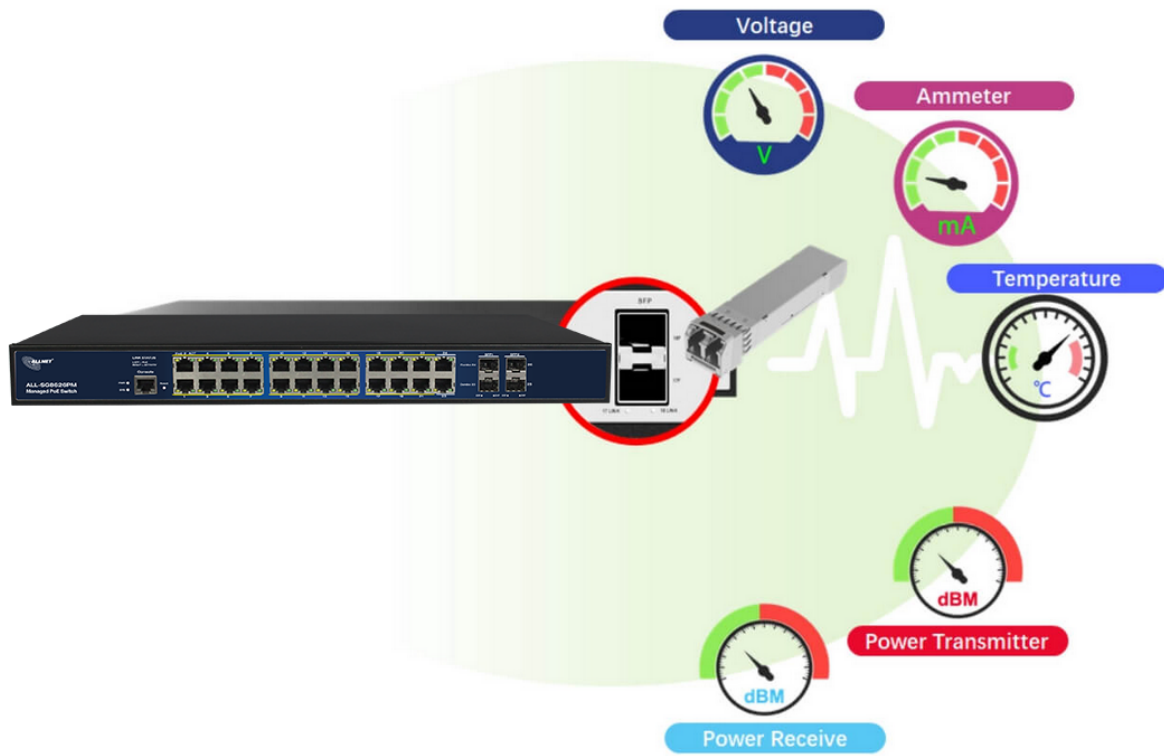
User-friendly Secure Management

For efficient management, ALL-SG8652PM-10G is a managed PoE switch, which is equipped with console, web and SNMP management interfaces. With management interface, ALL-SG8652PM-10G offers an easy-to-use, platform independent management and configuration facility. ALL-SG8652PM-10G supports SNMP and it can be managed via any management software based on the standard SNMP v1 or v2 Protocol. Meanwhile ALL-SG8652PM-10G offers Cisco-like command via Telnet or console port and customer doesn't need to learn new command from these switches. Moreover, ALL-SG8652PM-10G offers the remotely secure management by supporting SSH, SSL and SNMP v3 connection where the packet content can be encrypted at each session.

Intelligent SFP DDM Function

ALL-SG8652PM-10G supports SFP-DDM (Digital Diagnostic Monitor) function that greatly helps network administrator to easily monitor real-time parameters of the SFP and SFP+ transceivers, such as optical output power, optical input power, temperature, laser bias current, and transceiver supply voltage.

Digital Diagnostic Monitor (DDM)



Technical Details:

| | |
|---------------------|---|
| Model | ALL-SG8652PM-10G |
| Copper Ports | 48-10/100/1000BASE-T RJ45 auto-MDI/MDI-X ports |
| Fiber Ports | 4x1G/10GBASE-X SFP interfaces, supports 1G/10Gbps dual mode |
| PoE Ports | 1~48-802.3af/802.3at PoE Injector Ports |
| Console Ports | 1 x RS-232-to-RJ45 serial port (115200, 8, N, 1) |
| Switch Architecture | Store-and-Forward |
| Switch Fabric | 176 Gbps/non-blocking |
| Throughput | 130.94Mpps @64 bytes |
| Address Table | 32K entries |



| | |
|-------------------------|---|
| Share Data Buffer | 32Mb |
| Jumbo Frame | 9600 Bytes |
| SDRAM | 2Gb |
| Flash Memory | 128Mb |
| Flow Control | IEEE 802.3x pause frame for full-duplex Back pressure for half-duplex |
| Reset Button | >2 sec.: Factory default and reset |
| Power Supply | 100~240V AC, 50/60Hz, 4A (max.) |
| Power Consumption | Max. 370 watts |
| PoE Standards | IEEE 802.3af Power over Ethernet/PSE IEEE 802.3at Power over Ethernet Plus/PSE |
| PoE Power Supply Type | Per Port 52V DC, 300mA. Max. 15.4 watts (IEEE 802.3af) Per Port 52V DC, 600mA. Max. 30 watts (IEEE 802.3at) |
| LED Indicators | Power: Green Solid on- power work normal, off- power disconnected System: Green Blink-work normally, solid on- soft work abnormal, fast Blink - soft upgr ade PoE: Yellow Solid on- PoE work normally, Off- PoE doesn't work, Blink - PoE overload 10/100/1000T RJ45 Interfaces (Port 1 to Port 48): 1000 LNK/ACT (Green) Blink - port connected with data transmission; Solid on- port connected without data transmission 1G/10G SFP Interfaces (Port 25 to Port 28): Blue Blink - port connected with data transmission; Solid on- port connected without data transmission |
| EMC | Surge Immunity: 4KV Per: IEC61000-4-5 ESD Protection: ESD Level 4 Per: IEC61000-4-2 EFT Level 4 Per: IEC61000-4-4 |
| Layer2 Functions | |



| | |
|--------------------|---|
| Port configuration | <p>Auto-negotiation</p> <p>Flow Control</p> <p>Port Mirror: TX/RX/BOTH; Many-to-1 monitor</p> <p>CPU Mirror</p> <p>Traffic statistics</p> |
| Link Aggregation | <p>Static link aggregation</p> <p>LACP (Dynamic Trunk/Static Trunk)</p> <p>Algorithm based on Source/Destination MAC</p> <p>Algorithm based on Source/Destination IP</p> |
| MAC Table | <p>Aging Time</p> <p>Static MAC address</p> <p>Dynamic MAC address management</p> |
| VLAN | <p>4094 Active VLANs</p> <p>4094 VID</p> <p>802.1Q Tag VLAN</p> <p>Port VLAN</p> <p>Protocol VLAN</p> <p>MAC VLAN</p> <p>Voice VLAN</p> <p>802.1ad Q-in-Q tunneling</p> <p>Private VLAN (Protected port)</p> <p>GARP/GVRP</p> |
| ACL | <p>512ACLs</p> <p>L2, L3 e L4</p> <p>Time-based ACL</p> <p>IP ACL</p> <p>MAC ACL</p> <p>MAC-IP ACL</p> <p>User-Defined ACL</p> <p>ICMPv6</p> |
| Spanning tree | <p>802.1D Spanning Tree Protocol (STP)</p> <p>802.1w Rapid Spanning Tree Protocol (RSTP)</p> <p>802.1s Multiple Spanning Tree Protocol (MSTP)</p> <p>Loop Guard</p> |



| | |
|-------------------|---|
| | <ul style="list-style-type: none"> Root Guard TC-BPDU Guard BPDU Guard BPDU Filter |
| Ring Protection | <ul style="list-style-type: none"> <20ms G.8032 ERPS Ring Fast Ring |
| Multicast | <ul style="list-style-type: none"> 1024 groups IGMP v1/v2/v3 Snooping, Fast Leave MLD Snooping Multicast VLAN IGMP filter MVR Multicast Routing |
| QOS | <ul style="list-style-type: none"> 8 mapping IDs to 8 level priority queues CoS port-based CoS 802.1p-based CoS DSCP-based Scheduling algorithms SP, WRR, SP+WRR Storm Control (Broadcast, Multicast, Unknown Unicast) Bandwidth control per port SWRR, DWRR for Scheduling Flow Redirect Precedence TOS Rate Limiting(Ingress/Egress) Stri Priority |
| Security Features | <ul style="list-style-type: none"> Port Security MAC address filter ARP Association (Manual, ARP scanning, DHCP snooping) ARP Protection AAA DAI DoS (Denial of Service) Classification of packages based on: End.MAC, IP End, TCP / UDP Ports, Protocol Type; 802.1x Authentication (port-based e MAC-based) TACACS/TACACS+ Authentication RADIUS Authentication DHCP Filter Guest VLAN SSLv2/SSLv3/TLSv1 SSHv1/SSHv2 |



| | |
|--------------------------|---|
| | <p>Restriction of WEB access based on: IP Address, And. MAC and Port; Port Isolation Loopback detection</p> |
| Management | <p>SNMP v1/v2c/v3 with Full Private MIBs RMON 4 groups WEB (HTTP/HTTPS) CLI (Telnet, Console, SSHv1/v2) Firmware upgrade via console/web/TFTP Configuration Backup/Reload Dual Firmware LLDP Configuration Export/Import CDP Aware OAM (IEEE802.3ah) CFM (IEEE802.1ag) sFlow Telnet</p> |
| Other Features | <p>DNS Client DHCP Relay DHCP Client DHCP Snooping DHCP Option 66 DHCP Option 67 DHCP Option 82 NTP/SNTP Client UPNP UDLD</p> |
| PoE management | <p>Total PoE power budget control Per port PoE function enable/disable PoE admin-mode control PoE port power feeding priority Per PoE port power limitation PD classification detection PD alive check PoE schedule Soft-reboot PoE Non-stop</p> |
| Maintenance | <p>Cable Diagnostics Ping SFP DDM (Digital Diagnostics Monitoring) Thermal protection System log (Local and Remote) Memory and CPU Monitoring Tracert/ tracer 6</p> |
| Layer 3 functions | |
| Static Routing | <p>IPv4 Unicast: Static Routing(Software Base)</p> |



| | |
|---------------------|--|
| | IPv6 Unicast: Static Routing(Software Base) |
| IPV6 | IPv6 neighbor discovery (ND) Path maximum transmission unit (MTU) discovery Internet Control Message Protocol (ICMP) version 6 TCPv6/UDPv6 Ping6 Telnet(v6) Http/Https Interface IPV6 ACL IPV6 |
| Dimension | 440x290x44.5 mm |
| Weight | 4.5 kg |
| Working Temperature | -10 °C to 45 °C |
| Storage Temperature | -20 °C to 70 °C |
| MTBF | 50,000hrs |

Attributes

| Attribute | Value |
|-----------------------|--------------|
| Anzahl Ports PoE/LAN: | 24/0 |
| Belüftung Switch: | Mit Lüfter |
| Einsatzort Switch: | 19" |
| LAN Geschwindigkeit: | 1Gbit/s |
| Management: | full managed |
| PoE Budget: | <500 Watt |
| PoE Port Leistung: | 30W at |
| SFP Geschwindigkeit: | SFP 1Gbit |
| Weight: | 5 Kg |
| Warranty: | 24.00 Months |

Accessories

| Part No. | Name |
|----------|--|
| 146245 | ALLNET Switch Zubehör smart managed 24 Port Gigabit PoE AT Ersatzlüfter ALL-SG8428PM |
| 27947 | ALLNET ALL4750 / Switch module SFP (mini Gbic), 1000Mbit, SX |

| Part No. | Name |
|----------|---|
| 59426 | ALLNET ALL4751 / Switch module, GBIC mini module, 1000Mbit, |
| 114334 | ALLNET Switch Modul ALL4752 SFP(mini Gbic), 1000Mbit, LHX/LC |
| 59391 | ALLNET ALL4753 / Switch module GBIC Mini module, 1000Mbit, L |
| 59393 | ALLNET ALL4755 / Switch module SFP (mini Gbic), 1000Mbit, ZX |
| 143548 | ALLNET Switch Module ALL4756 SFP(Mini-GBIC), 1000Mbit, ZX/LC |
| 141113 | ALLNET ALL4780 / Switch Modul (Mini-GBIC), 2Wire-Set, max. 1 |
| 75932 | Patchkabel RJ45 FTP(F/UTP) 0,25m grau, CAT5e, Synergy 21, |
| 75939 | Patchkabel RJ45 FTP(F/UTP) 0,5m grau, CAT5e, Synergy 21, |
| 75946 | Patchkabel RJ45 FTP(F/UTP) 1,0m grau, CAT5e, Synergy 21, |
| 75959 | Patchkabel RJ45 FTP(F/UTP) 2m grau, CAT5e, Synergy 21, |
| 75966 | Patchkabel RJ45 FTP(F/UTP) 3m grau, CAT5e, Synergy 21, |
| 75973 | Patchkabel RJ45 FTP(F/UTP) 5m grau, CAT5e, Synergy 21, |
| 75979 | Patchkabel RJ45 FTP(F/UTP) 7,5m grau, CAT5e, Synergy 21, |
| 75986 | Patchkabel RJ45 FTP(F/UTP) 10m grau, CAT5e, Synergy 21, |
| 76091 | Patchkabel RJ45, 15m grau, CAT5e, S-FTP(SF/UTP), Synergy 21, |
| 76029 | Patchkabel RJ45, 0,25m grau, CAT5e, S-FTP(SF/UTP), Synergy 21, |
| 76036 | Patchkabel RJ45, 0,5m grau, CAT5e, S-FTP(SF/UTP), Synergy 21, |
| 76043 | Patchkabel RJ45, 1,0m grau, CAT5e, S-FTP(SF/UTP), Synergy 21, |
| 76056 | Patchkabel RJ45, 2m grau, CAT5e, S-FTP(SF/UTP), Synergy 21, |
| 76063 | Patchkabel RJ45, 3m grau, CAT5e, S-FTP(SF/UTP), Synergy 21, |
| 76070 | Patchkabel RJ45, 5m grau, CAT5e, S-FTP(SF/UTP), Synergy 21, |
| 76077 | Patchkabel RJ45, 7,5m grau, CAT5e, S-FTP(SF/UTP), Synergy 21, |
| 76084 | Patchkabel RJ45, 10m grau, CAT5e, S-FTP(SF/UTP), Synergy 21, |
| 76091 | Patchkabel RJ45, 15m grau, CAT5e, S-FTP(SF/UTP), Synergy 21, |
| 76117 | Patchkabel RJ45, CAT6 250Mhz, 0,25m grau, S-STP(S/FTP), LSZH, Synergy 21, |
| 76124 | Patchkabel RJ45, CAT6 250Mhz, 0,5m grau, S-STP(S/FTP), LSZH, Synergy 21, |
| 76133 | Patchkabel RJ45, CAT6 250Mhz, 1,0m grau, S-STP(S/FTP), LSZH, Synergy 21, |
| 76151 | Patchkabel RJ45, CAT6 250Mhz, 2m grau, S-STP(S/FTP), LSZH, Synergy 21, |
| 76160 | Patchkabel RJ45, CAT6 250Mhz, 3m grau, S-STP(S/FTP), LSZH, Synergy 21, |
| 76169 | Patchkabel RJ45, CAT6 250Mhz, 5m grau, S-STP(S/FTP), LSZH, Synergy 21, |
| 76178 | Patchkabel RJ45, CAT6 250Mhz, 7,5m grau, S-STP(S/FTP), LSZH, Synergy 21, |
| 76187 | Patchkabel RJ45, CAT6 250Mhz,10m grau, S-STP(S/FTP), LSZH, Synergy 21, |

| Part No. | Name |
|----------|---|
| 76196 | Patchkabel RJ45, CAT6 250Mhz,15m grau, S-STP(S/FTP), LSZH, Synergy 21, |
| 140955 | TP(RJ45) POE-Tester, at/af, Endspan/Midspan, standard, Synergy 21, |
| 141255 | Netzkabel 230V Schutzkontakt CEE7(Stecker)->Kaltgeräte IEC-C13(Buchse), 1m,Black IEC Lock |
| 141254 | Netzkabel 230V Schutzkontakt CEE7(Stecker)->Kaltgeräte IEC-C13(Buchse), 2m,Black IEC Lock |
| 141256 | Netzkabel 230V Schutzkontakt CEE7(Stecker)->Kaltgeräte IEC-C13(Buchse), 3m,Black IEC Lock |
| 188424 | CyberPower USV, OR-Serie, 600VA/360W, Line-Interactive, LCD, 19"/1HE, USB/RS232, IEC C13 Kaltgeräte, |
| 188433 | CyberPower USV, OR-Serie, 650VA/360W, Line-Interactive, LCD, 19"/1HE, USB/RS232, CEE7-Schutzkontakt, |
| 188435 | CyberPower USV, OR-Serie, 1000VA/600W, Line-Interactive, LCD, 19"/1HE, USB/RS232, IEC C13 Kaltgeräte |
| 188439 | CyberPower USV, OR-Serie, 1500VA/900W, Line-Interactive, LCD, 19"/1HE, USB/RS232, IEC C13 Kaltgeräte |
| 146282 | ALLNET Switch Module ALL4767 SFP+(Mini-GBIC), 10Gbit |
| 101189 | ALLNET ALL4757 / Switch module SFP+ (mini Gbic), 10Gbit, SR/ |
| 149613 | ALLNET Switch Module ALL4757-INDU SFP+(Mini-GBIC), 10Gbit |
| 101190 | ALLNET ALL4758 / Switch module SFP+ (mini Gbic), 10Gbit, LR/ |
| 149616 | ALLNET Switch Module ALL4758-INDU SFP+(Mini-GBIC), 10Gbit |
| 208360 | ALLNET Switch Modul ALL4767-INDU SFP+(Mini-GBIC), 10Gbit, RJ45(TP), uncodiert, Industrial -40/+85 Grad, |
| 139776 | ALLNET Switch Module ALL4763 SFP+(Mini-GBIC), 10Gbit |
| 139777 | ALLNET Switch Module ALL4764 SFP+(Mini-GBIC), 10Gbit |
| 191685 | ALLNET Switch Modul ALL4768 SFP+(Mini-GBIC), 10Gbit Singlemode, ER/LC, bis 40Km |
| 191686 | ALLNET Switch Modul ALL4769 SFP+(Mini-GBIC), 10Gbit Singlemode, ZR/LC, bis 80Km |
| 234699 | ALLNET Switch full managed Layer2+ zbh. Replacement bracket for ALL-SGxx 18/26/28/54 - Short version |

[Click here to discover more items from this category in our shop.](#)