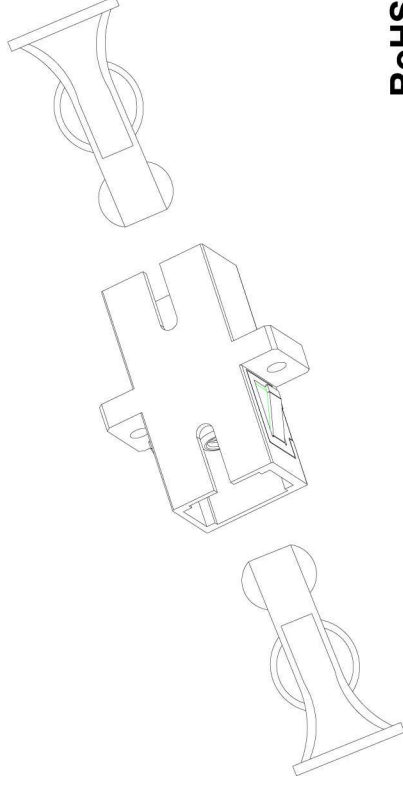
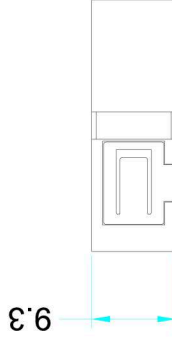
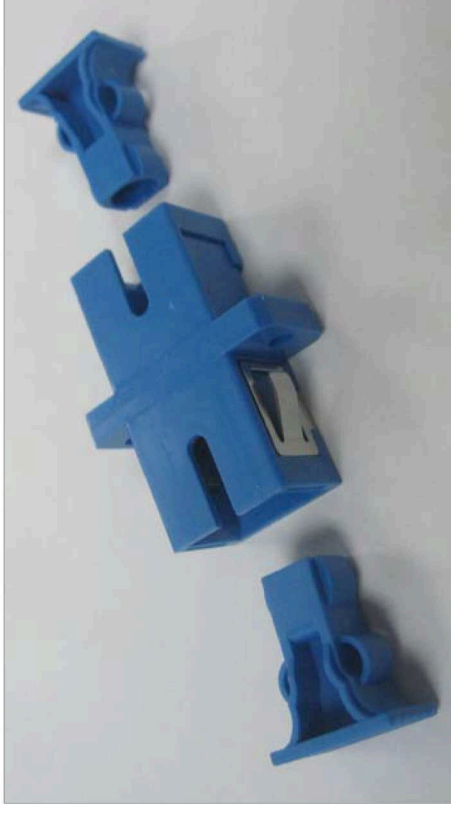
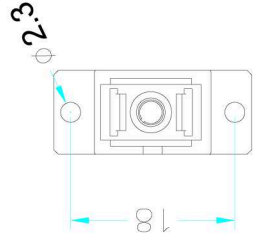
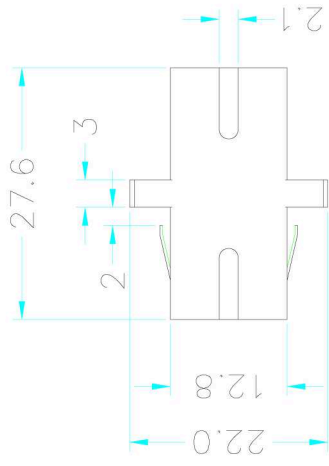


SC Singlemode Simplex Adapter, Plastic Housing



Specifications:

1. Housing Material: Plastic , Blue
2. Sleeve Material: Ceramic
3. Insertion Loss: <0.2dB@1310nm
Return Loss: >55dB@1310nm
4. Durability(500matings):0.2dB Max.increase
5. RoHS compliant
6. Operating temperature: -25° C~ 70° C
7. Storage temperature:-40° C~80° C

**RoHS
compliant**

DESCRIPTIONS: SC Singlemode Simplex Adapter

Part No: 53302.31

Drawing No:

Page :1 of 1