



EnGenius Cloud SD-WAN Gateway

One Solution. No complexity.

The EnGenius Cloud security gateway unifies your network perfectly, providing your IT team with an incredibly easy setup, enterprise-level security, and an end-to-end network solution that can be cloud-managed from absolutely anywhere. The gateway is that crucial first line of defense—improving the flow of network traffic while delivering an extra layer of protection against increasingly sophisticated cyberattacks and malware.

High Speed 2.5 Gigabit WAN and LAN Ports

The security gateway has two WAN and two LAN ports capable of up to 2.5G speeds—more than double the speed of most gateways today. The gateway has not only high-speed Ethernet connections but a high inline 2.5Gbps architecture for superior uplink and downlink transmissions without the bottlenecks.

High-Efficiency Stateful Firewall

The EnGenius security gateway has a stateful firewall with maximum throughput up to 2.35Gbps while quickly blocking the types of attacks that exploit protocol vulnerabilities. The stateful firewall integrates corporate security policies and real-time filtering of malicious internet traffic.

Uninterrupted Connection with WAN & Cellular Link

The dual 2.5 Gigabit WAN ports are capable of highly efficient load-balancing, increasing overall WAN bandwidth. The gateway also features redundant WAN link and cellular failover, automatically switching itself to a backup WAN or 3G/4G/5G network in the event of WAN uplink failure.

Secure Site-To-Site and Client VPN

The EnGenius SECURITY GATEWAY features site-to-site and client VPN that can be activated in a few clicks without the hassle of configuring all VPN detail parameters, allowing businesses to create secure, private connections for communication and remote work.

Self-Healing Auto VPN

EnGenius Cloud continually monitors EnGenius gateway VPN connections and automatically updates VPN parameters to all peers while maintaining VPN connection even with WAN IP address reassignment or port forwarding changes.

Features & Benefits

- Simple, unified cloud management for any size business.
- Intuitive and centralized device visibility from anywhere.
- Quad core 1.6 GHz processor for greater speed and power.
- Dual 2.5GbE WAN and Dual 2.5GbE LAN for maximum performance.
- 2.5 GbE PoE+ to power up a Wi-Fi 6E AP, IP camera or IP phone.
- Built-in load balancing and safeguards with dual-WAN and cellular failover.
- Enhance security with a high-throughput firewall.
- Quick VPN and VLAN setup for easy configurations.
- Fast Site-to-site VPN and Client VPN for secure connections.
- Self-healing AUTO VPN to minimize disruption.
- Passthrough mode for easy integration into existing networks.
- TPM chipset to enhance the security level of the gateway.
- Touchless system maintenance and automatic updates.
- No licensing or subscription fees needed.

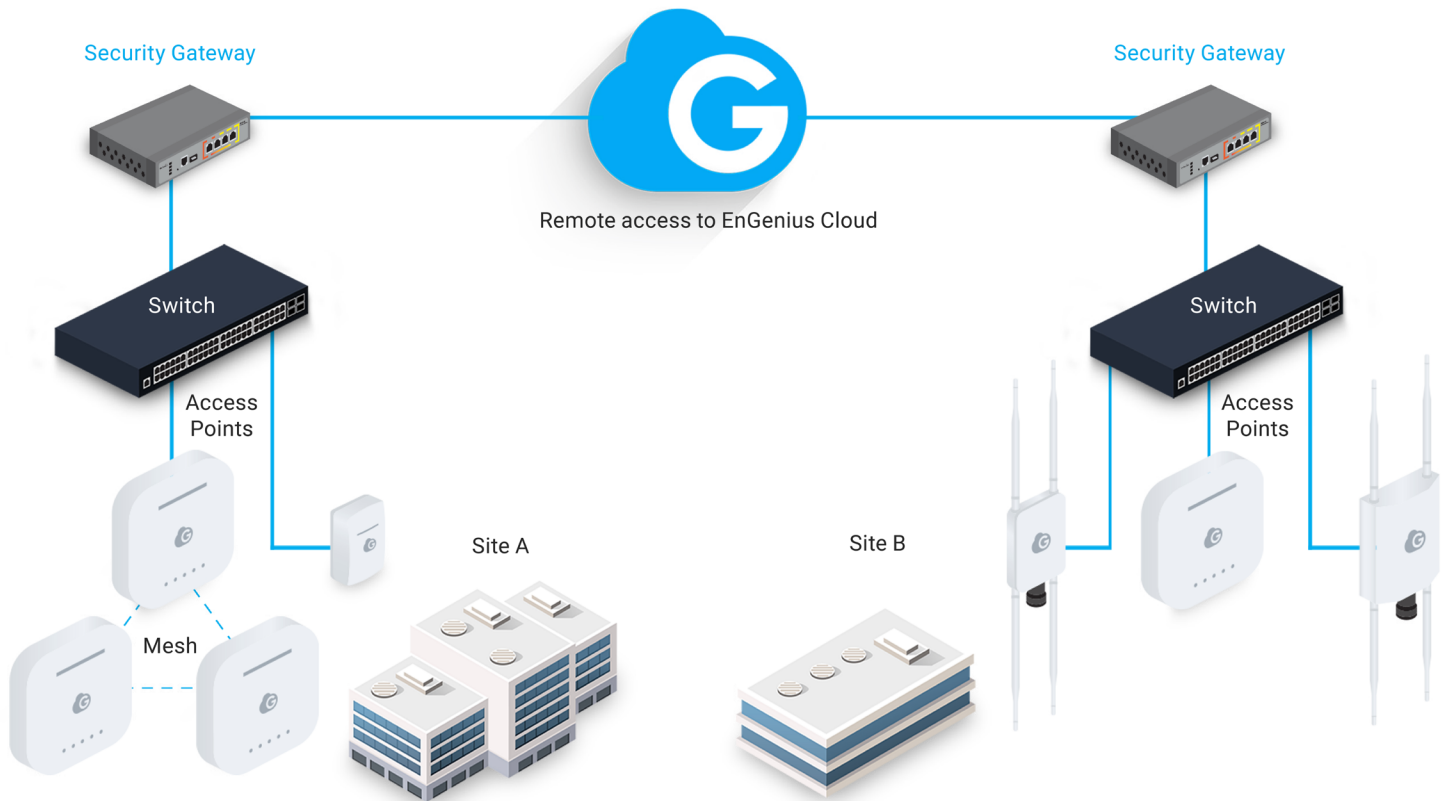
ESG510



Benefits for Your Business

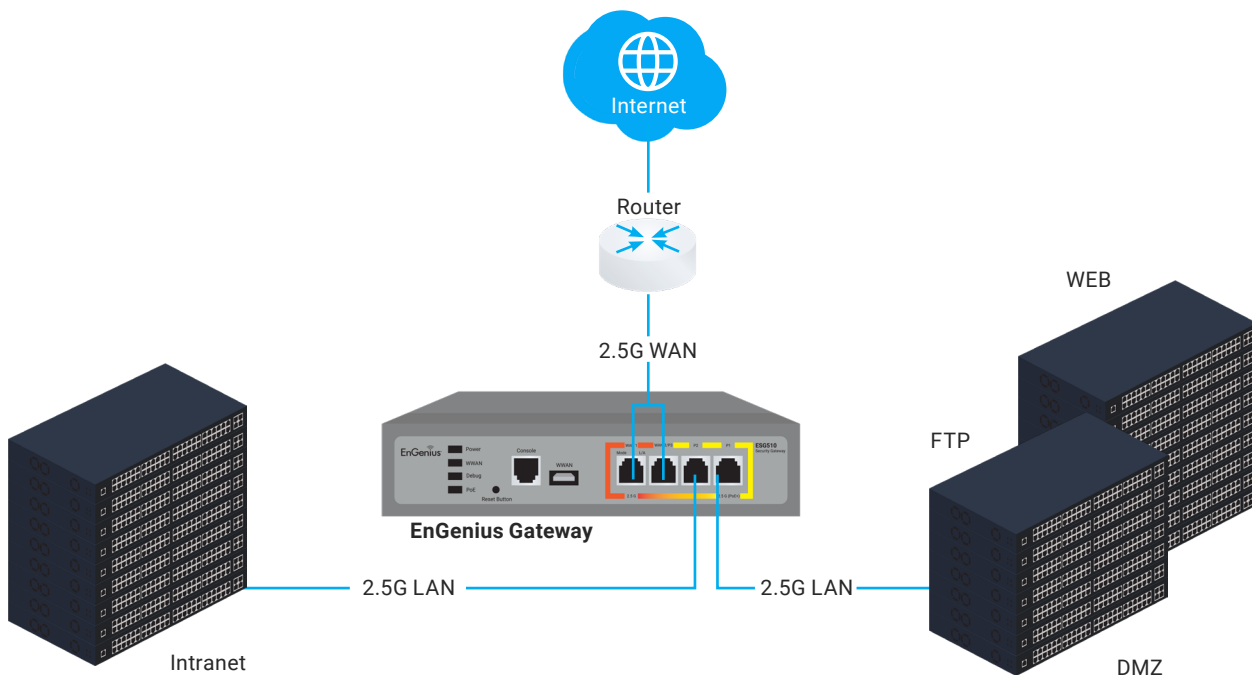
End to End Unified Cloud Management Solution

Provide businesses with a next-generation cloud solution that simplifies the management of networks with enterprise security gateways, reliable gigabit switching, and future-proof wireless access points through a single pane of glass or intuitive mobile app.



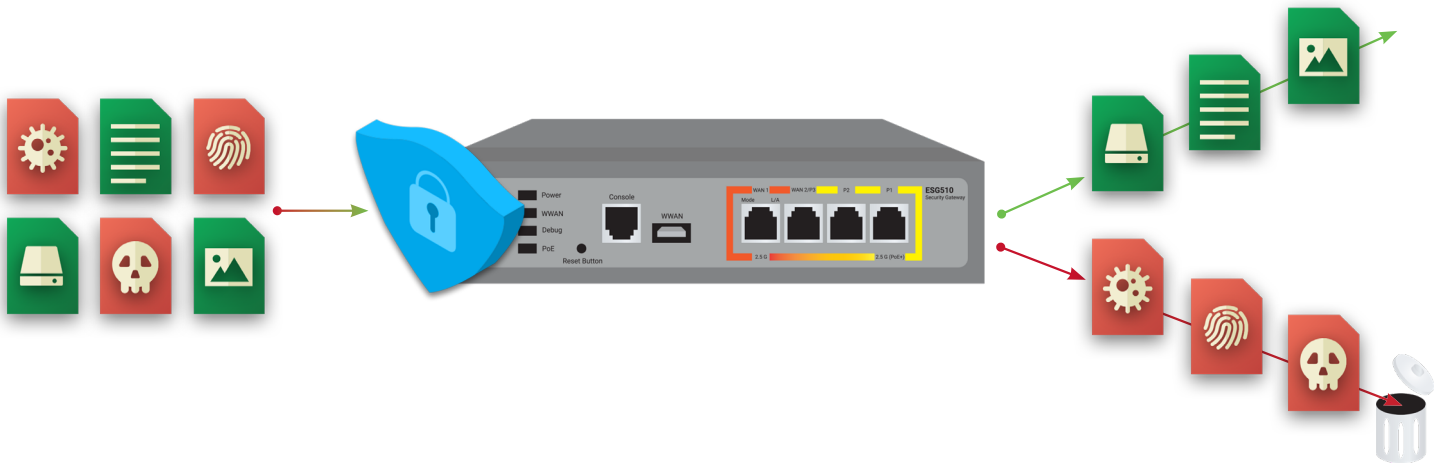
High-Speed Ports for Optimal Performance

Businesses can meet higher network speed demands through the dual 2.5 gigabit WAN and LAN ports to ensure a reliable, smooth connection for external and in-line networking without any bottlenecks.



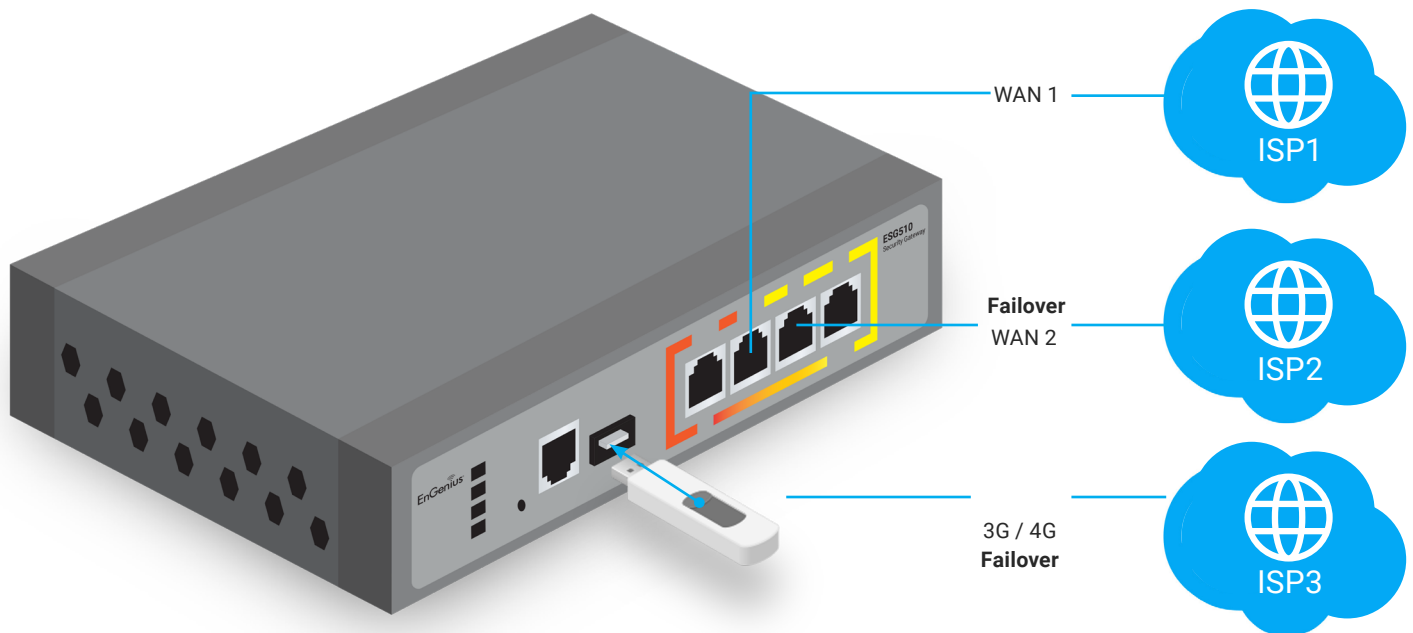
Protect Networks without Sacrificing Performance

EnGenius Security Gateways protect business networks from threats and attacks without sacrificing performance. The stateful firewall of the gateway integrates corporate security policies and real-time filtering of malicious internet traffic while delivering high throughput.



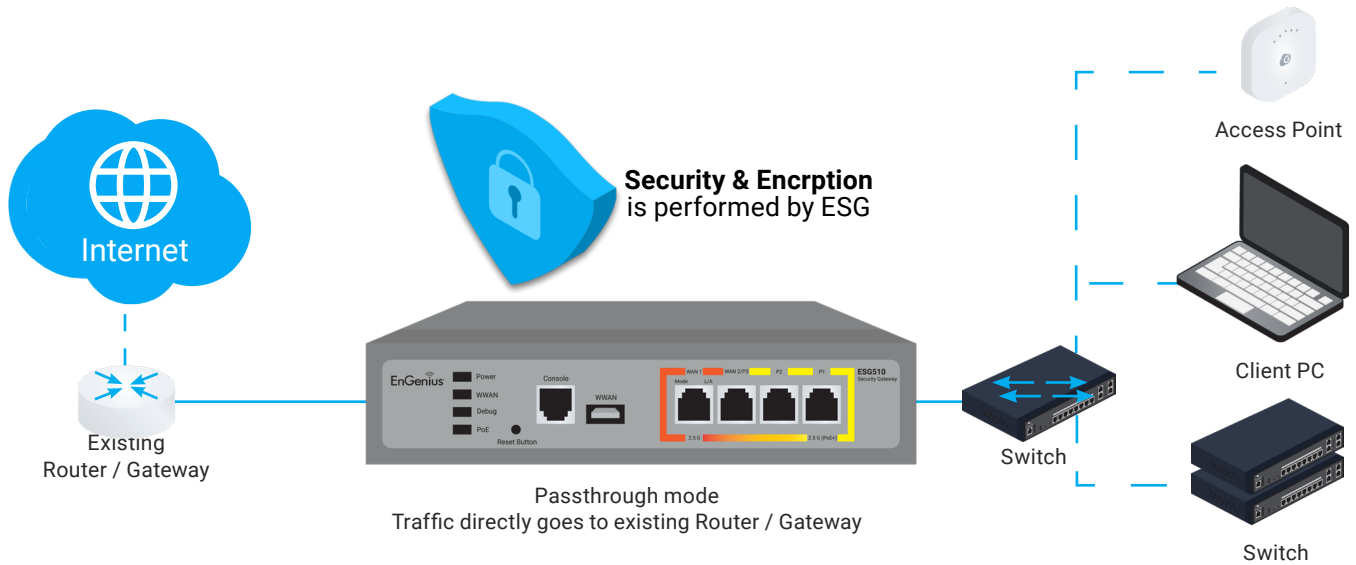
Stay Connected with Faster WAN Speeds

Businesses can stay connected through the security gateway's secondary 2.5 gigabit WAN port or a cellular dongle. The dual WAN ports are ready for load balancing to increase WAN bandwidth or redundancy links. The gateway's failover option can provide continuous connectivity through a 3G/4G/5G network or the secondary WAN to minimize disruption to business networks.



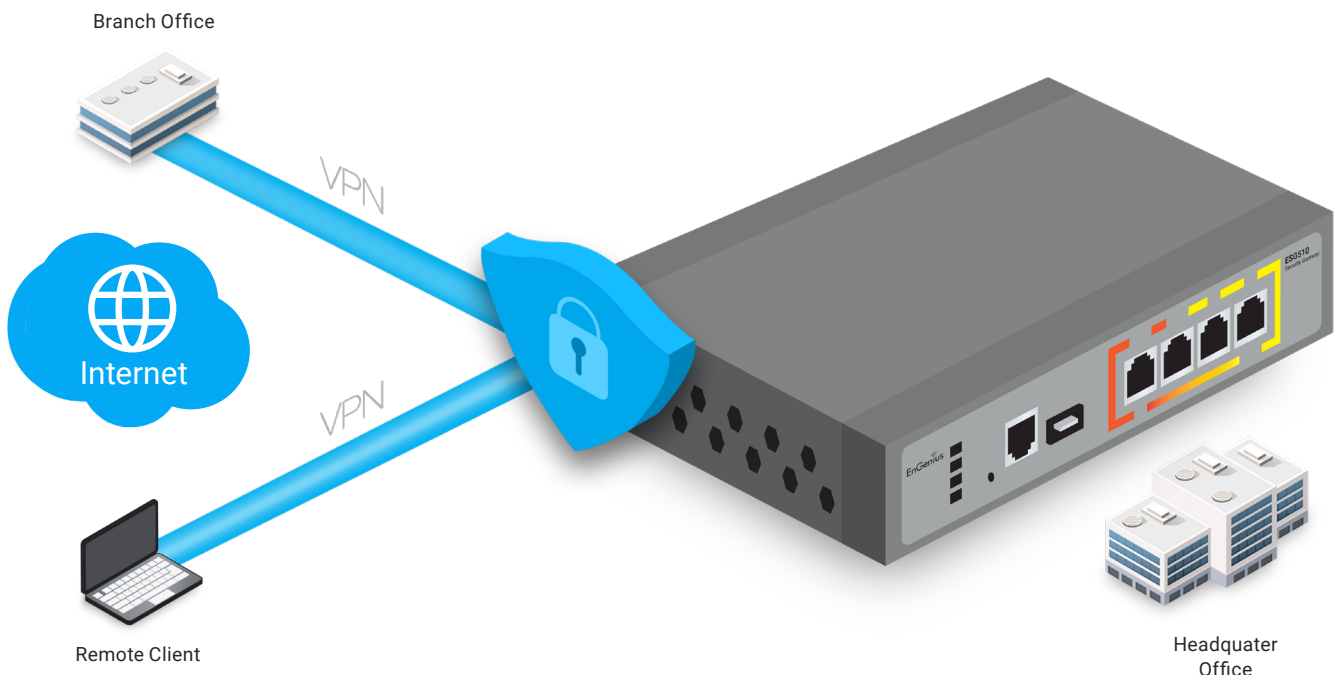
Secure Any Existing Network

The EnGenius Security Gateway can be placed on and secure any business network. The security gateway's "passthrough" mode will provide enterprise security protection and monitoring without affecting or disrupting existing gateway or router function in the network.



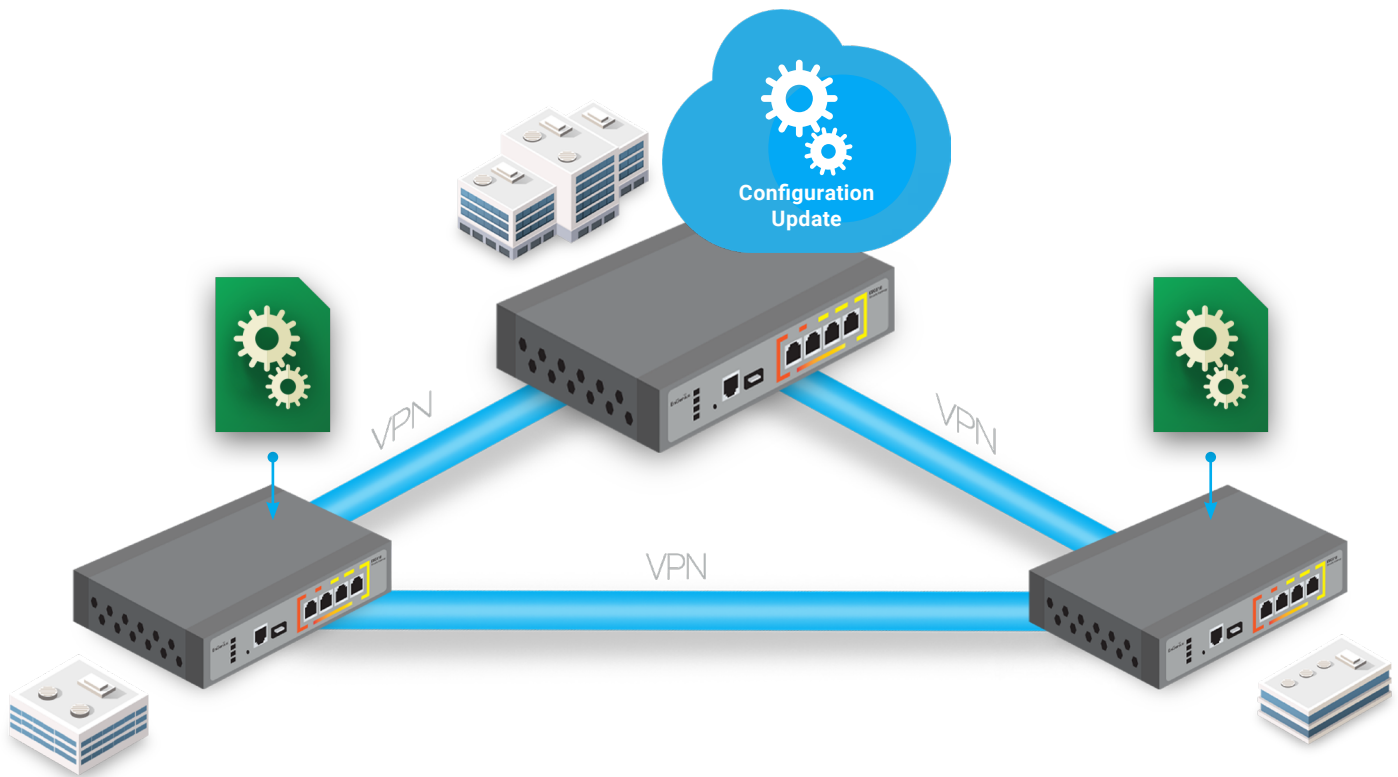
Secure Site-to-Site VPN and Client VPN

EnGenius Security Gateways enable businesses to create secure VPN connections for remote business sites and remote clients. Administrators can easily create fast site-to-site VPN tunnel connections maintaining corporate security policies for all remote business sites while keeping data and employees safe. Client VPN will secure private data communications between corporate headquarters and remote workers from anywhere.



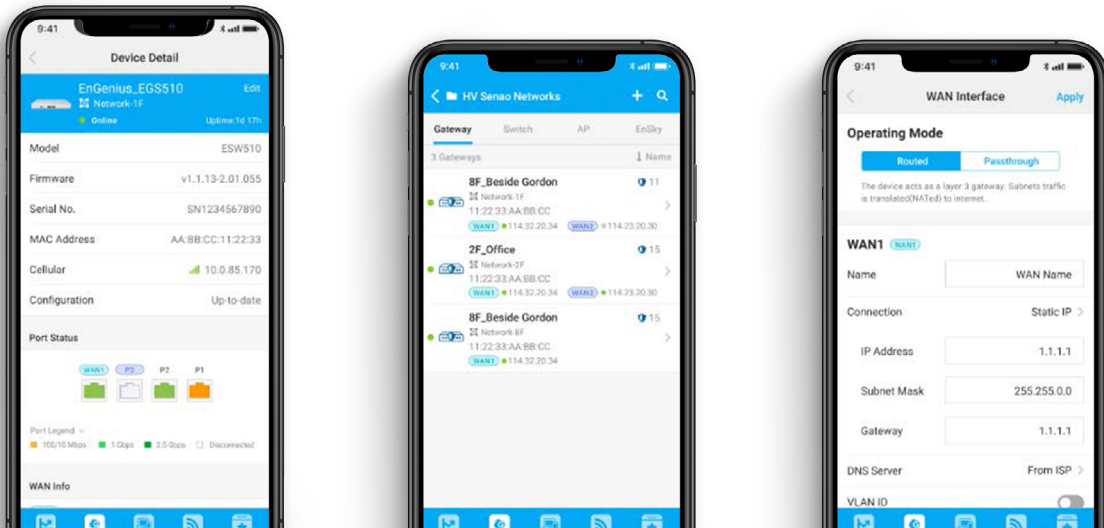
Easy Self-healing Auto VPN

EnGenius Security Gateways have the fastest VPN setup saving admins from time-consuming and complicated configurations. It takes just a few clicks to create a secure VPN connection without the hassle of configuring all the VPN detail parameters. EnGenius auto VPN will update WAN/IP parameters across sites to maintain connections in the event of WAN port configuration changes from the ISP.



Remote Management On-the-Go

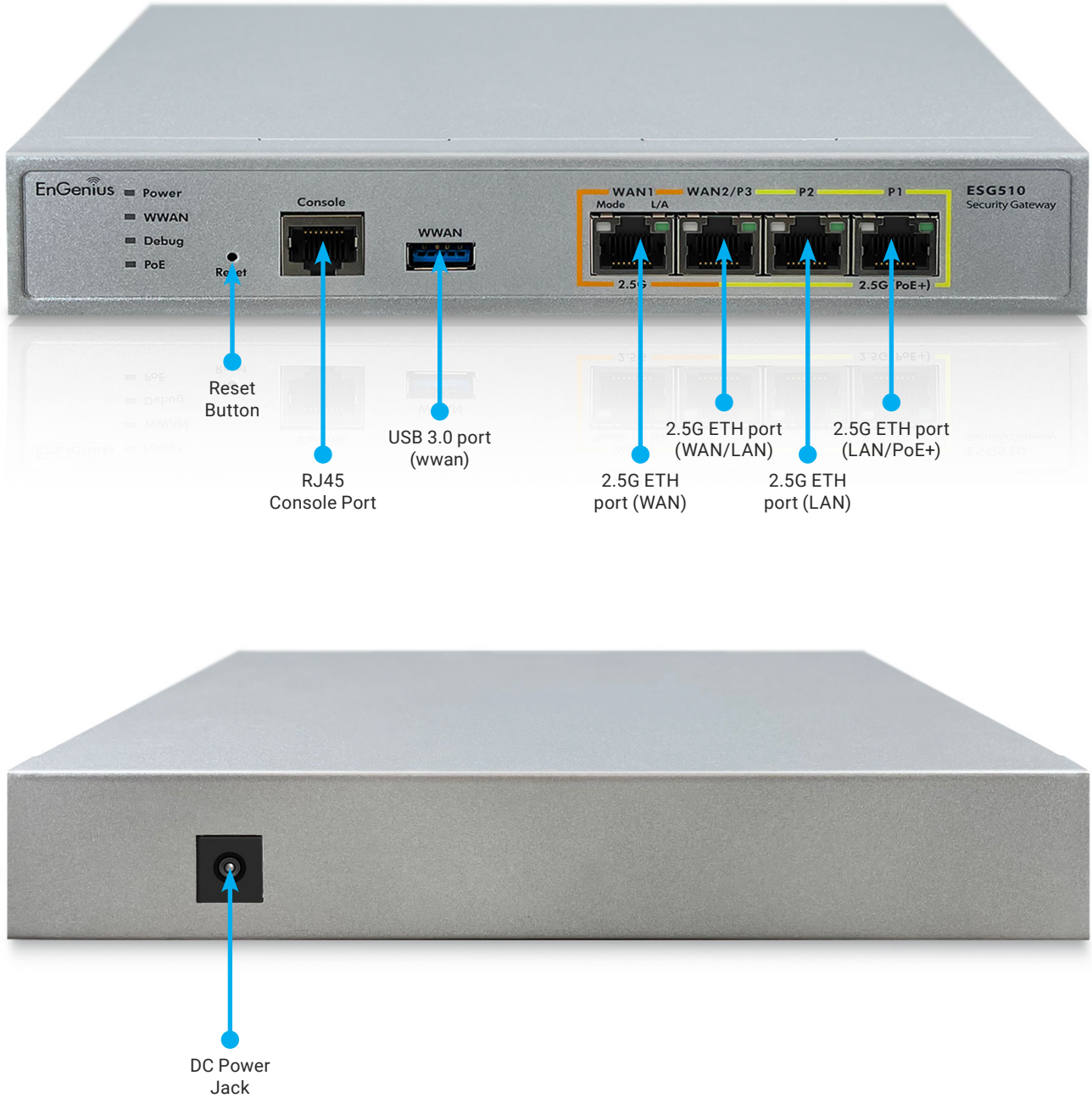
Easy setup and central management of the entire network from absolutely anywhere with EnGenius Cloud interface and Cloud To-Go mobile app.



Technical Specifications

ESG510	VPN	ENVIRONMENTAL & PHYSICAL
CPU Processor	Site-to-Site VPN	Power
Quad-Core	Mesh VPN/Hub-and-Spoke	54V/1.2A
Operating Frequency	Encryption	Operating Temperature
1.6GHz	DES, 3DES, AES (256-bit)	0°C to 40°C
Memory	Authentication	Humidity (non-condensing)
4GB	MD5, SHA1, SHA2 (512-bit)	5 to 95% non-condensing
Storage	Key Management	ENVIRONMENTAL & PHYSICAL
8GB	IKEv1 (x-auth, mode-config)	Package Contents
Network Ports (Copper Ports)	IKEv2 (EAP, configuration payload)	Power adapter
4 x 10/100/1000/2500 BASE-T, RJ-45 Ethernet ports	VPN Features	Power cord
Console Port	Site-to-Site VPN	RJ-45 Console Cable
1 x 10/100/1000, RJ-45 Ethernet port	Client VPN	Wall Mount Kit
PoE+ Capable Port	Policy-based VPN	Quick Installation Guide
1 (802.3af/at) LAN (P1)	IPsec NAT traversal (NAT-T)	Dimensions & Weights Device
Mounting Method	Dead Peer Detection (DPD)	Weight: 2.14 lbs. (.97 kg)
Wall mount	Auto-VPN Connection	Width: 8.27" (210 mm)
USB Interface	Auto NAT traversal	Length: 7.07" (179.5 mm)
1 x USB 3.0	NETWORKING	Height: 1.38" (35 mm)
Security Chip	Operation Mode	COMPLIANCE & WARRANTY
TPM	Routed/Passthrough	Regulatory Compliance
PERFORMANCE & CAPACITY	Multiple WANS	FCC Part 15 (Class B)
Firewall (SPI Throughput)	Dual (WAN 1 & WAN/P3)	IC
4G	Bandwidth Limit	CE EMC (Class B)
VPN Throughput	Per Interface/Per Client	RCM
970 Mbps	Traffic Load Balancing	BSMI
Max. TCP Concurrent Sessions	WAN load balancing with WRR	Certifications
1,000,000	Networking Features	CE, FCC, IC
Max. Concurrent VPN Tunnels	Static Route	Warranty
200	Multiple WANS	2 years
Max. VLAN	USB Cellular	
96	User Authentication	
FIREWALL	PPPoE	
Firewall Features	VLAN Tagging	
Stateful Packet Inspection	Captive Portal	
Policy Rules	Custom Splash Page	
Port Forwarding	Dynamic Routing	
1:1 NAT	Bandwidth Limit	
Allow Inbound Services	Traffic Load Balancing	
	DHCP client/server/relay	
	Dynamic DNS support	

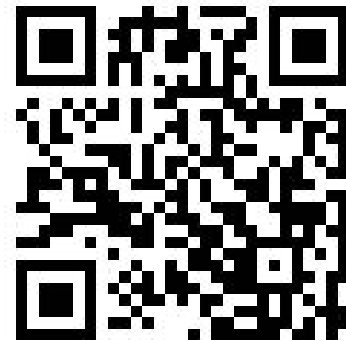
ESG510 Gateway



Plug & Play with Zero Configuration



EnGenius Cloud To-Go



EnGenius Technologies | 1580 Scenic Ave. Costa Mesa, CA 92626

Email: partners@enginustech.com | Website: enginustech.com
Local contact: (+1) 714 432 8668

EnGenius Technologies Canada | Ontario, Canada

Email: info@enginustech.com | Website: www.enginustech.com
Local contact: (+1) 905 940 8181

Maximum data rates are based on IEEE 802.11 standards. Actual throughput and range may vary depending on distance between devices or traffic and bandwidth load in the network.

Features and specifications subject to change without notice. Trademarks and registered trademarks are the property of their respective owners. For United States of America: Copyright ©2022 EnGenius Technologies, Inc. All rights reserved.

Version: 09/2022