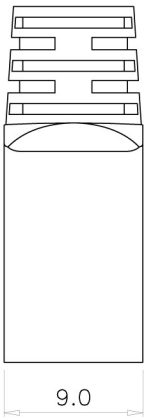
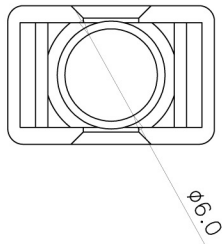
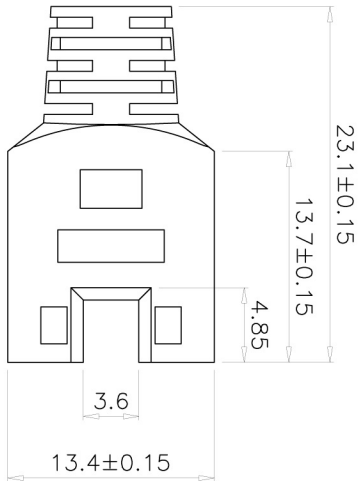


SCALE 2/1



Remark : PRH-SR/XXA
(1)

(1) XX : Boot COLOR
RD(RAL3031)=RED OR(RAL2003)=ORANGE YL(RAL1021)=YELLOW
GN(RAL6029)=GREEN BL(RAL5015)=BLUE BK(RAL9011)=BLACK
PU(RAL4006)=PURPLE GY(RAL7035)=GRAY WH(RAL9010)=WHITE

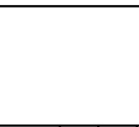
Specification :

Material :
1. SR : ABS, UL 94V-0.

GENERAL TOLERANCE OF DIMENSIONS
X.XXX ±0.005
XXX ±0.05
X.X ±0.1

| | | |
|----------|-------------|---------|
| DRAWING | 05.JAN.2005 | SHUJUAN |
| CHECK | 05.JAN.2005 | DAY |
| APPROVAL | 05.JAN.2005 | JAIMY |
| DATE | | NAME |
| SCALE | 2/1 (A4) | UNIT |

| | |
|------------------------|-----------------|
| DRAWING NO. | PRH-SR-XXA(SA1) |
| DRAWING CLASSIFICATION | S |
| SHEET | 1 OF 1 |
| ITEM NO.: | PRH-SR/XXA |
| DES.: | PRH-SR φ6.0mm |



| | |
|------------------------|-----------------|
| DRAWING NO. | PRH-SR-XXA(SA1) |
| DRAWING CLASSIFICATION | S |
| SHEET | 1 OF 1 |
| ITEM NO.: | PRH-SR/XXA |
| DES.: | PRH-SR φ6.0mm |

| | |
|------------------------|-----------------|
| DRAWING NO. | PRH-SR-XXA(SA1) |
| DRAWING CLASSIFICATION | S |
| SHEET | 1 OF 1 |
| ITEM NO.: | PRH-SR/XXA |
| DES.: | PRH-SR φ6.0mm |



1 2 3 4 5 6 10cm