

SYNERGY 21[®]

- NOTE:
- PANEL FRAME:SPCC T=1.5MM with plastic powder cladding Frosting surface treatment
 - Mounting plate Nickel Plating T=1.5MM
 - PANEL BRACKET SPCC T=1.5MM with plastic powder cladding Frosting surface treatment
 - BODY COLOR: Gray "1 2 3.....24" Color: black Font : Arial H:4.4MM
BODY COLOR: Black "1 2 3.....12" Color: white Font : Arial H:4.4MM Color: white
 - Accessory:
 - Cable Tie (75X1.9mm) *24pcs
 - Screw and Nut M6*18mm × 4set
 - RoHS 3.0 and REACH Compliant
 - Packing:1pc/PE bag+Inner box 10pcs/outcarton

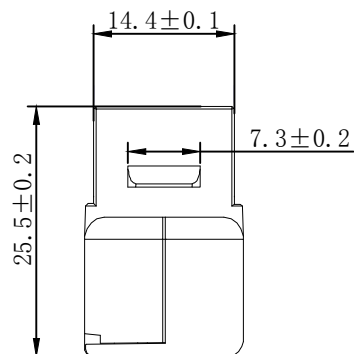
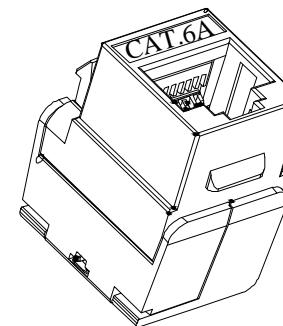
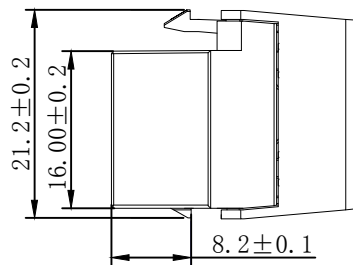
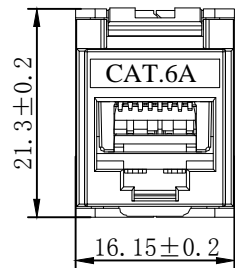
PANEL COLOUR GRAY: "SYNERGY 2 " for black printing The pantone of Color is black C
"1" for blue printing The pantone of Color is 298C

PANEL COLOUR BLACK: "SYNERGY 2 " for silver printing The pantone of Color is 877C
"1" for blue printing The pantone of Color is 298C

| ITEM NO. | Colour |
|-----------|----------------|
| S216336V2 | Gray RAL 7035 |
| S216337V2 | Black RAL 9005 |

| SYNERGY 21 | | | | | | | | | |
|--------------|--|--|--|--|----------------------|--|--|------------|--|
| CUSTOMER | | | ITEM NO. | | MANUFACTURE COUNTRY: | | | | |
| PRODUCT NAME | | | 19" 1U 24 ports STP blank Patch panel Three-piece type | | CHINA UNIT MM | | | | |
| DRAWNBY | | | CHECKBY | | APPOBY | | | DATE | |
| SYNERGY 21 | | | SYNERGY 21 | | SYNERGY 21 | | | 2020-02-21 | |

| NEW | | | 2020-02-21 | | A | |
|-------------------------------|-----|--|------------|--|------|--|
| REVISION RECORD MODIFICATIONS | | | DATE | | REV. | |
| BY | CHK | | | | | |



NOTES:

ELECTRICAL:

1. Contact Resistance : 20MΩ MAX
2. Insulation Resistance : 500MΩ MIN @ 500V DC
3. Withstand Voltage : DC 1000V AC 700V RMS 60Hz, 1MIN
4. Component testing for Cat.6A to ISO/IEC 11801 Ed.2.2:2011-06
 DIN EN 50173-1:2011-09
 TIA/EIA-568-C.2 (2009-08)
 IEC 60603-7-5

5. Compliance with Class EA up to 500 MHz to ISO/IEC 11801 Ed.2.2:2011-06
 DIN EN 50173-1:2011-09

ENVIRONMENTAL:

1. Storage : -40° TO+70°
2. Operation : -10° to+60°

MECHANICAL

1. SHIELD MATERIAL: ZINC ALLOY
2. IDC MATERIAL: PC TERMINAL:PHOSPHOR BRONZE, TIN PLATING
3. RJ45 Contact Life: 750 Times Min
4. Plug inforce:<30N
5. Solid cable:1/22AWG(0.65MM)-1/24AWG(0.45MM) ID:0.8MM-1.6MM
6. Cable OD: 5.0mm-8.5mm
7. PoE per IEEE 802.3af, PoE+ per IEEE 802.3at

Fluke Test:Permanent Link ISO 11801 (PL2)Class Ea 1000MHZ
 AWG23/1 CAT.7 Shielded 15M

RoHS(EU2015/863) and REACH Compliant

PACKING:1PCS/PE BAG

MATERIAL LIST:

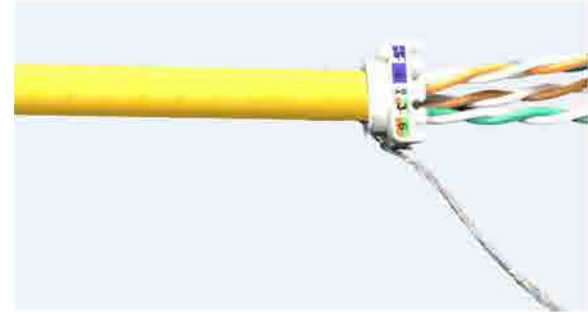
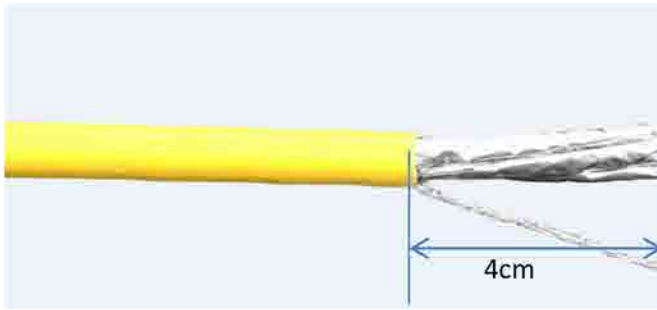
| | | | | |
|---|-------------------|--------------------------------------|---|--|
| ⑦ | MODULAR COVER | White/PC with T568A/B label | 1 | |
| ⑥ | RJ 45 JACK INSERT | PHOSPHOR BRONZE 8P8C 6U" GOLD PLATED | 8 | |
| ⑤ | PCB | 1.6mm UL 94V0 | 1 | |
| ④ | IDC BODY | White/PC | 1 | |
| ③ | IDC PIN | PHOSPHOR BRONZE & TINNED | 8 | |
| ② | LABEL COLOR CODE | T568A/B | 2 | |
| ① | IDC TERMINAL | FOR 22-24AWG(0.45mm-0.65mm) CABLE | 1 | |

| NO | PARTS NAME | SPECIFICATION STANDARD | QT' Y | REMARK |
|----|------------|-------------------------------|------------|--------|
| | | | | |
| | | NEW | 2019-05-09 | A |
| BY | CHK | REVISION RECORD MODIFICATIONS | DATE | REV. |

| SYNERGY 21 | | | | | |
|--------------|--------------------------|----------------------|------------|---------|----|
| CUSTOMER | | | ITEM NO. | S216349 | |
| PRODUCT NAME | CAT.6A STP KEYSTONE JACK | manufacture country: | china | UNIT | MM |
| DRAWNBY | CHECKBY | APPOBY | DATE | | |
| SYNERGY 21 | SYNERGY 21 | SYNERGY 21 | 2019-05-09 | | |

Montageanleitung/Installation Instruction

Super short body Cat.6A Keystone Jack

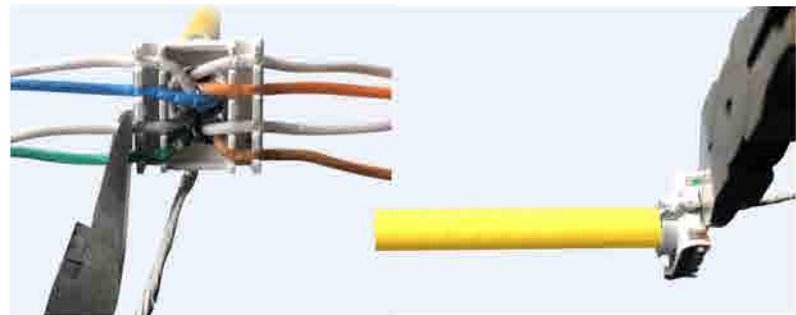
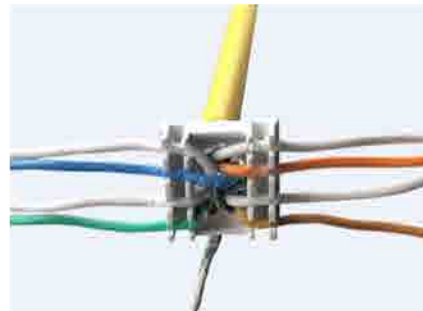


①. Stripping off approx. 4cm, twist the braiding into a strand.
Remove the pair shielding.

②. Pass the cable wires into grommet without the strand
as shown in the photo.

①. Ca. 4 cm abziehen und das Geflecht zu einer Litze
verweben. Entfernen Sie die Paarabschirmung.

②. Führen Sie die Kabeldrähte ohne die Litze in die
Durchführung ein (siehe Foto).



③. Insert each wire in its location
according to the color code.

④. Cut the wires and the strand.

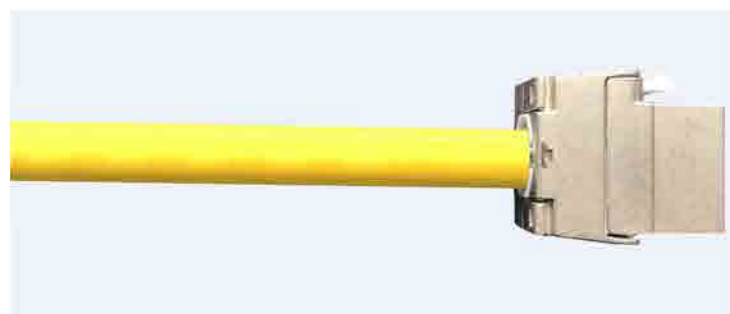
③. Legen Sie jeden Draht gemäß
dem Farbcode an seiner Stelle ein

④. Schneiden Sie die Drähte und die Litze ab.



⑤. Make sure that the arrows of the jack are oriented in the same direction as those of the grommet.

⑤. Stellen Sie sicher, dass die Pfeile des Wagenhebers in die gleiche Richtung wie die der Tülle zeigen.



⑥. Connect the grommet to the connector.

⑦. Fold the cheeks of the RJ45 jack until completely closed.

⑥. Verbinden Sie die Tülle mit dem Anschluss.

⑦. Falten Sie die Wangen der RJ45-Buchse, bis sie vollständig geschlossen sind.