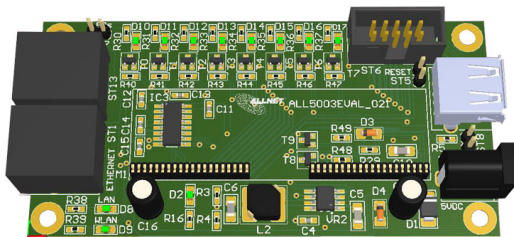


ALLNET ALL5003EVAL / Development and Evaluation Kit incl. AL

>>> [Go to the shop article](#)



EAN CODE



Development consisting of:

ALL5003EVAL Evaluationboard

ALL5003CPU Board

- 1x WiFi antenna incl. pigtail
- 1x LAN cable RJ45
- 1x 5V Power supply
- 1x Serial cable adapter 3-fold

Technical Details ALL5003EVAL:

- Powered by 5V power supply
- Dimensions: 100 * 50 mm
- Console port RS232 to RJ45
- 1 USB-A-socket (Host)
- RJ45-socket for Ethernet
- 8 programmable LEDs
- 3.3V to supply its own projects
- 1x 10-pin box header for easy access to the I/O pins of the CPU board
- 8 LEDss are switched off by jumper
- Reset & Factory Default can be triggered via jumper
- 2 additional LEDs for LAN and WLAN Activity



Part No.: 92764
Vendor Part No.: ALL5003EVAL

Technical Details ALL5003CPU:

- CPU: Ralink RT5350, 360 MHz (MIPS)
- FLASH: 32 MB
- RAM: 32 MB
- 7x usable GPIO-Pins
- 1x USB-Host-Port
- 1x serial interface (Console)
- 1x LAN-connection 10/100 Mbit
- 1x U.FL socket

Dimension:

- Module-Size: 65 * 21 mm
- Mounting: any
- Pin connector pin spacing 1.27 mm single-breasted
- 2x 20 Pins