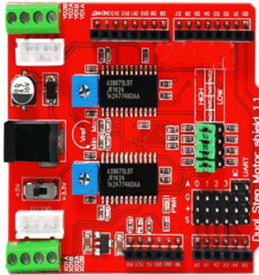


ALLNET 4duino 2 Kanal Stepper Motor Diver



EAN CODE



ALLNET 4duino 2 Kanal Stepper Motor Diver
2-Channel 3.3V 5V Stepper Motor Driver Shield Expansion Board For Arduino
Product Description

- 1.This is a four line two phase stepper motor drive designed especially for arduino, it adopts easydriver protocol.It can use 4.75V~30V power supply.
- 2.The stepper motor drive chip,it adopts the same with EasyDrive, so it can act as two EasyDrive modules. All pins have been lead out as 3Pin electronic block/sensor block ports.
- 3.Provide two channel stepper motor drive.
- 4.3.3V/5V operating level.
- 5.Provide multiple electronic block ports for easier connection with various electronic block modules.
- 6.Drive mode can be set via jumper cap.
- 7.The wiring part is equipped with terminals and pins for usage under different situations.
- 8.Driving current can be adjusted via opting potentiometer. The two channels can be adjusted seperately.

Weitere Bilder

